



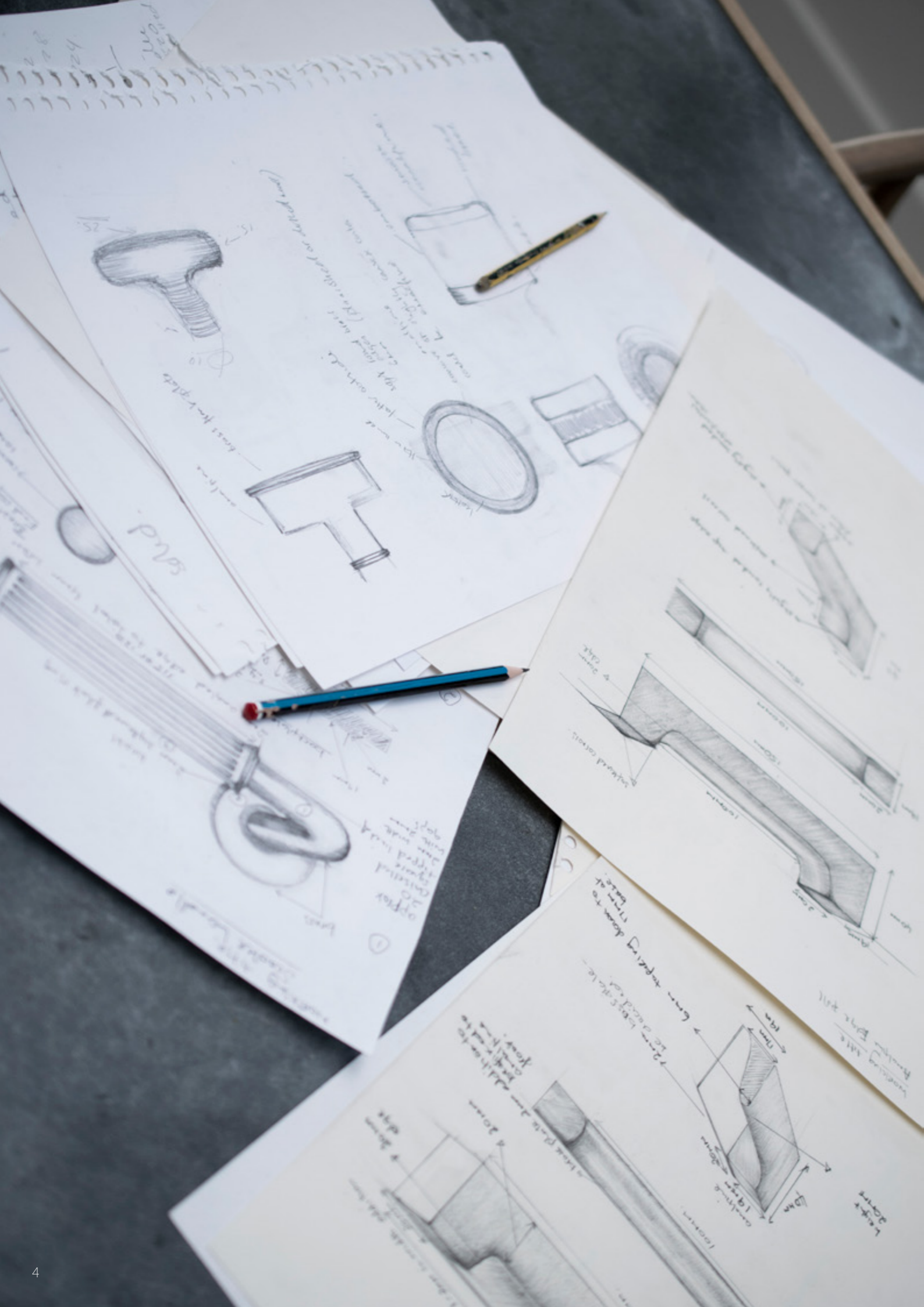
TURNSTYLE
DESIGNS

MADE IN ENGLAND

LUXURY BRITISH HARDWARE

Luxury hardware, designed and manufactured in the heart of North Devon, England.





OUR STORY

Turnstyle Designs was established in 1992, at a time when door hardware was considered to be primarily functional and lacked any real innovation. Turnstyle Designs was created with a vision to shake up the market and introduce innovative design, processes and new materials.

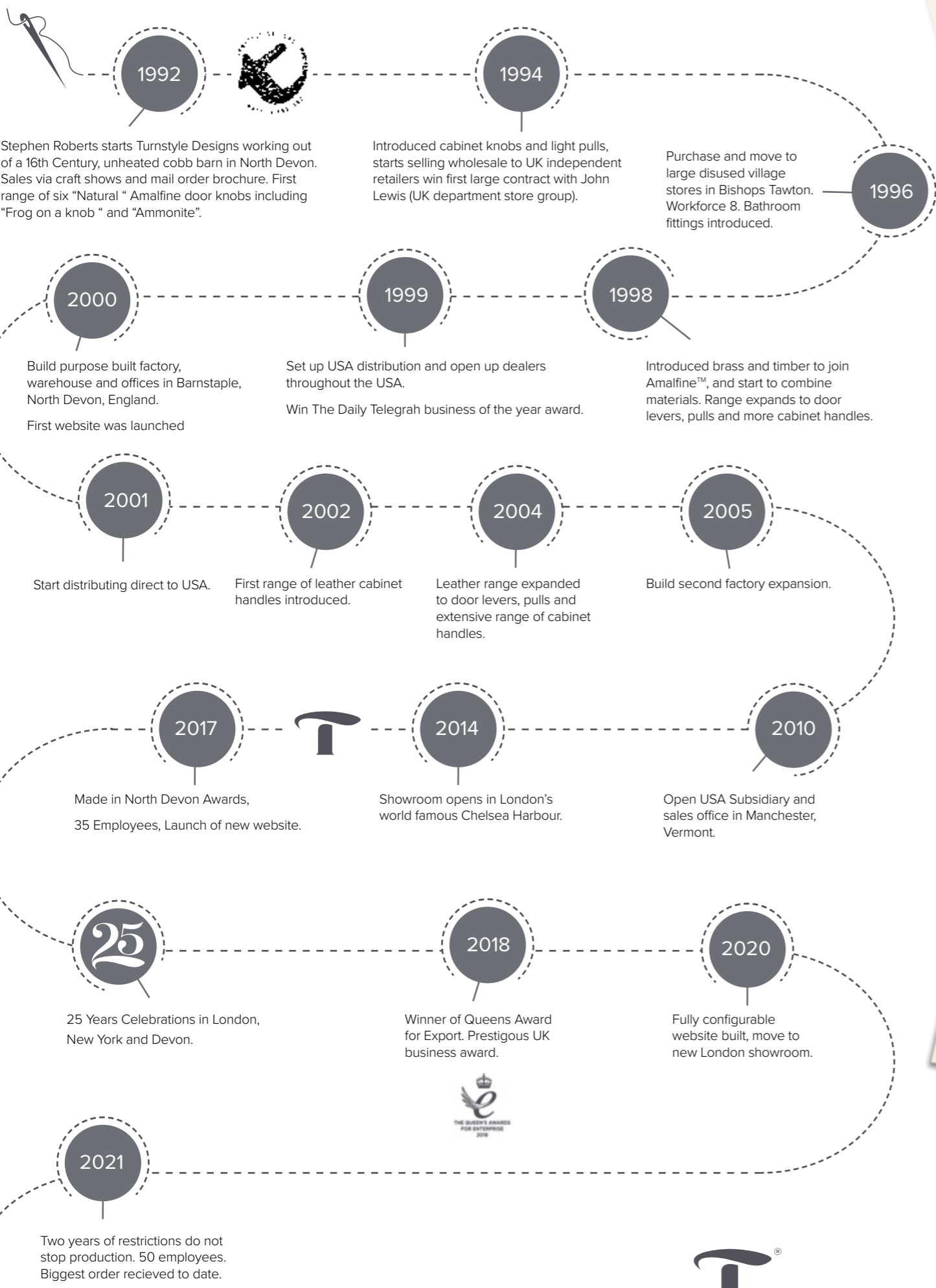
30 years on, Turnstyle Designs is considered one of the foremost producers of luxury, designed, door hardware in the world, supplying some of the most prestigious and interesting building and superyacht projects in over 46 countries throughout the world.

What once started out in a makeshift workshop at the end of the garden, has now become an award winning, renowned global business, operating out of purpose built factory and offices, in beautiful North Devon, England.

The company is still privately owned by Steve and Christina Roberts, with succession plans for the next generation in place, Turnstyle is able to look long term with its planning and development.

We are extremely proud of our long standing, dedicated crew of staff, manufacturing our products with a blend of craftsmanship and engineering to the very highest of standards and our sales and support team who pride themselves on offering outstanding service.





30 YEARS OF  **TURNSTYLE**
DESIGNS
MADE IN ENGLAND



MEET THE MAKERS



We love a challenge, either producing our own new designs or responding to client requests, there is never a dull day in our R and D department. Working out how to incorporate new materials or processes that both look fantastic whilst also being fully functional and durable is one of our main strengths. Be it casting new blends of composites, metal finishing techniques, intricate leather work or any other myriad of opportunities, we will find a solution and hone it until it is perfected.



From the design collaboration of Steve and Christina Roberts, to our development department who fine tune, research and test, we ensure sustainability is engineered into all our products from the outset.

Our teams of leather workers, metal finishers, engineers, assemblers, pickers and packers all work closely together to ensure every product is checked at each stage of production, ensuring that our final QA has very little to do.

Guaranteed Quality

Every handle passes through at least eight pairs of hands before its final quality inspection. However, if by any chance you do have a problem or find fault with one of our handles, we have a no quibble returns policy. We don't put a limit on our guarantee, if the handle has been cleaned and used as instructed and it fails, we will repair or replace it.

Find us on social media to learn more about our manufacturing, products and processes.



CONTENTS

4 - 5 **OUR STORY**

6 - 7 **TURNSTYLE TIME LINE**

8 - 9 **MEET THE MAKERS**

12 - 13 **SUSTAINABILITY**

14 - 15 **OUR MATERIALS**

16 - 17 **OUR FINISHES**

18 - 21 HAMMERED BRASS

22 - 25 Square Hammered

26 - 31 Barrel Hammered

32 - 33 Tube Hammered

34 - 37 SOLID BRASS

38 - 39 Square Solid

40 - 45 Barrel Solid

46 - 47 Flush Pulls

48 - 49 Tube Solid

50 - 51 Flute Solid

52 - 53 Complimentary Hardware

54 - 57 AMALFINE™

58 - 65 Shagreen Amalfine™

66 - 67 Hickory Amalfine™

68 - 71 Bamboo Amalfine™

72 - 77 Faceted Amalfine™

78 - 81 Labyrinth Amalfine™

82 - 87 Woven Amalfine™

88 - 91 Rough Cut Amalfine™

92 - 93 Norton Amalfine™

96 - 99 Wire Amalfine™

102 - 103 Flute Amalfine™

104 - 107 Barrel Amalfine™

108 - 109 Tube Amalfine™

110 - 115 LEATHER

116 - 117 Square Leather

120 - 123 Barrel Leather Stitched

126 - 129 Barrel Leather

130 - 131 Woven Leather

132 - 133 Bonneville Leather

134 - 135 Tube Leather

136 - 137 Leather Flush Pulls

138 - 139 CUSTOM SOLUTIONS

140 - 143 Made to Measure

144 - 145 Tailor Made

146 - 147 Modify

150 - 153 MARINE

154 - 155 Latching Handles

156 - 157 OUR PARTNERS

158 - 159 Image Credits

SUSTAINABILITY

Sustainability is and always has been a part of the Turnstyle DNA. From the materials and processes we use to how we deal with waste and reducing our carbon footprint. We strive to continually improve how we operate as a manufacturer and a business.

“All the evidence for climate damage is too powerful and present to deny, so we have two choices, do nothing and bury our heads in the sand or act and act now. Businesses, regardless of size all have a responsibility to push sustainability to the front of their agenda, economic and ecological sustainability are intrinsically linked, you cannot be one without doing the other.”

Steve Roberts, MD Turnstyle Designs

Based in the heart of the UNESCO North Devon Biosphere we are fortunate enough to live in one of the worlds most beautiful places, a clear reminder to us how important it is for all of us to live and work responsibly.



Manufacturing

We manufacture everything in the UK keeping our transport impact as low as possible. We only use vegetable tanned Italian bridal leather, sourced from European farms.

Our trademark Amalfine™ material is also made up of a composite blend, which includes by-products such as marble dust. This is currently mixed with 20% petro chemical resins, we are working to develop and use a Bio resin in the near future. Best of all we make our handles to last, strongly believing that if you buy well, there is only a need to buy once.

All new product design considers materials and energy use as a primary driver. We are introducing innovative green materials and trying to move away from damaging processes and materials such as hexavalent chrome plating.

Factory

We operate from a highly insulated, energy efficient factory and offices, using our own solar PV derived energy to run air source heating in the offices, direct infrared in the factory and lit with low energy LED throughout. We recycle everything where possible, including canteen waste, and have a zero to landfill policy.

Circular Economy

We hate waste and we would always rather repair and reuse than replace, which is why we have a process set up to assess any damage and either send out a repair kit, or have the product returned to the factory for repair. If it is beyond commercial repair, we will break it down and recycle it. We are also setting up a new system to take back our old, unwanted handles, to either repair and re-sell (proceeds going to charity), or break down into components for

Carbon offsetting

We know that this is not the answer and only used as a temporary contribution to our carbon footprint, never the less we measure every part of our carbon output and then treble the cost, to donate to some great carbon sequestration schemes.

Packaging

All our cardboard is made from recycled paper, printed with water based inks. We have removed 99% of single use plastics from our packaging and replaced them with fast and completely biodegradable alternatives. We have a zero to landfill waste policy with virtually everything we use being recycled.

Transportation

We are working hard with all our staff to cut down air-travel, and endeavour to replace as many face to face meetings as we can with online sales and training sessions. Company cars are now fully electric, with E charges at the factory.

Our 'Bike to Work' incentive scheme, pays staff to walk or bike to work offers team members the opportunity to reduce their carbon emissions, while keeping fit.

1% FOR THE PLANET

Supporting the fight

As proud members of '1% for the planet', we donate 1.5% our annual turnover to environmental causes and organisations and a further 0.5% to mental health charities.

See our website for full details and links to the charities we support.
www.turnstyledesigns.com

THE HIGHEST QUALITY MATERIALS

Brass

Using brass as the base material enables Turnstyle Designs to offer a wide range of beautifully robust plated finishes. Turnstyle Designs also have a number of hand produced 'living finishes' that will develop their own unique character as they age. The majority of parts are machined, but we also use extrusions, forging and die casting in our processes.

Amalfine™

Perfected over the last three decades, Amalfine™ is a proprietary composite, unique to Turnstyle Designs. Warm to the touch and incredibly detailed, each Amalfine™ finish runs throughout the grip making them extremely durable and maintenance free. Hand cast with metal cores, each component is put through a laborious three stage process, including hours of finishing to produce a deep, lustrous finish.

Leather

More than 20 years ago, Turnstyle Designs were the first door hardware company to start using leather on their handles and have perfected the art of applying and hand stitching leather door and cabinet hardware. Using a bonding technique and glue that surpasses anything else on the market and ensures longevity and durability. We work with only the finest full grain, vegetable tanned bridle leather to produce an exquisite end product. All our leather comes from a long established Italian tannery using only certified European hides and tanned using historic, natural tanning processes. Faux leather options for flush fitted hardware are also available in a choice of colours. These are exact colour matches to the genuine leather versions and a great solution for any hardware that may be damaged by finger nails when in use.

We also offer custom alternatives made from imitation or faux leather, please contact sales for further details.

+44 (0) 1271 325 325 | sales@turnstyledesigns.com



FINISHES

Living finishes

Living finishes are designed to change with time and use. Brass components are polished and then treated in a number of different ways to change the surface, either by accelerated ageing as with the Vintage and Burnished finishes or brushing as with our Satin Brass.

All living finishes are finished with a highly durable wax, which will wear

according to use, we do not use Lacquer, to avoid uneven blotchy wear.

Brass living finishes can be used outdoors, but will be subject to the specific atmosphere of the location and change accordingly.

Brass Living



Polished Brass (PU)

Solid brass, expertly polished to a high sheen, pure and simple with nothing added to allow the natural aging process or keep it polished with any good brass cleaning products. **LV-EXT**



Vintage Patina (VP)

Hand polished brass base, matt treatment before patinated to a rich dark brown, lightly distressed for highlights. Finished with a durable wax coating. **LV-EXT**



Fine Antique Brass (FA)

Hand polished brass, lightly patinated and brushed to highlight and contrast. Finished with a durable wax coating. **LV-EXT**



Satin Brass (TW)

Hand polished, then wire brushed for a golden finish. Wax coated. This finish will darken with age unless kept polished. **LV-INT**



Vintage Nickel (VN)

Nickel plated brass, skilfully patinated by our team of craftsmen, followed by hand distressing and wax polishing. **LV-INT**

Brass Plated



Bright Chrome (BC)

Sometimes referred to as Polished Chrome, solid brass base, highly polished, nickel base coat with a durable chrome top coat. Easy to maintain and our most durable finish. **PL-EXT**



Polished Nickel (PN)

Solid brass base, finished with our beautifully subtle nickel plating, silver with hints of yellow. Superb in contemporary or traditional interiors. Clean with any quality nickel polish. **PL-INT**



Satin Nickel (SN)

Still our most popular plated finish, solid brass with a fantastic, flat satin nickel plating, no brushwork. A superbly versatile finish that will stand the test of time. **PL-INT**



Matt Black Chrome (CB)

Our latest addition to our plated finishes, a four step process developed by our highly skilled team of finishers, this is a completely matt black plated finish. Highly durable and practical for interior or exterior use. **PL-EXT**

Hammered Living



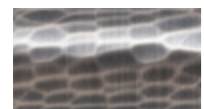
Polished Brass (PU)

Solid brass, expertly polished, then hammered and polished a second time to a high sheen, with subtle light refraction. Either allow the natural aging process or keep it polished with any good brass cleaning products. **LV-EXT**



Burnished Brass (BH)

For our hammered finishes we use a more gentle technique to patinate, each piece is hand burnished to break the surface before being patinated, then subtly distressed, hand polished and waxed to give a luxurious antique finish, highlighting every hammer blow perfectly. **LV-EXT**



Burnished Nickel (NH)

Polished solid brass, individually hammered, then nickel plated before being hand burnished, patinated and distressed to be finished with a wax finish. Eight pairs of hands before assembly, QA and packing. **LV-INT**

Hammered Plated



Bright Chrome (BC)

Solid brass hand polished then individually hammered, before plated with a crisp and bright chrome plating. Highly reflective hammer blow texture that is easy to maintain and our most durable finish. **PL-EXT**



Polished Nickel (PN)

As with Chrome, solid brass, polished, hammered and re polished before being finished with our beautifully subtle nickel plating. Superb in contemporary or traditional interiors. Clean with any quality nickel polish. **PL-INT**



Satin Nickel (SN)

Solid brass, polished, individually hammered a thousand times, and finished with a fantastic, flat satin nickel plating, no brushwork. A superbly versatile finish that will stand the test of time. **PL-INT**

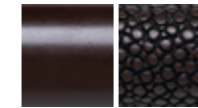
FINISHES

Amalfine™

Warm to the touch, tactile and incredibly detailed, our Amalfine™ finishes are also extremely durable and maintenance free. Each design and pattern translates differently according to the finish, see our website to view all designs in all finishes.

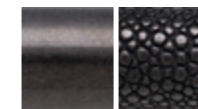
Please note Amalfine™ designs are recommended for interior use only.

Amalfine™



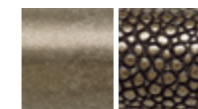
Cocoa (CO)

Dyed marble composite, plain designs reminiscent of mid century Bakelite.



Black Bronze (BB)

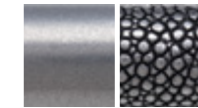
Dyed marble mixed with real bronze, highly polished to bring out the bronze highlights, a rich black that will go well in any interior.



Silver Bronze (SB)

Heavily loaded cold cast bronze, highly polished and waxed to produce a rich dark golden finish.

Amalfine™



Alupewt (AP)

A secret blend of composite metals, polished and dyed to bring out the highlights in the more detailed designs such as Shagreen.



Sand (SA)

Only available with specific designs such as Shagreen, Labyrinth, Hickory and Bullet. Dyed marble, with a dark stain to produce a highly unique finish.



Bone (BN)

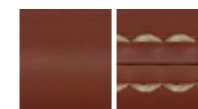
Made to order only, and only applicable to non textured designs.

Leather



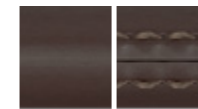
Tan (TA)

Light, luxurious leather, edged with a soft, natural thread.



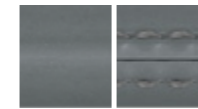
Chestnut (CN)

A glorious, reddy, nutty brown, full of life and finished with a natural thread.



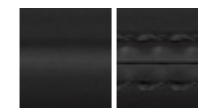
Chocolate (CT)

A rich dark brown, our most popular colour, finished with a dark brown thread.



Slate (GC)

A mid tone grey, growing in popularity, great with our silver plated finishes and edged with a silver grey thread.



Black (BL)

A beautiful, subtle sheen, classic leather, finished with a black thread.



White (BW)

White leather, white thread, white edging for a clean and contemporary look.

Woven Leather



Tobacco (TC)

A reddish brown mix of woven strands to produce our best selling classic.



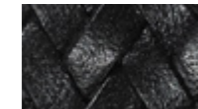
Flint Grey (FG)

A beautiful mid grey with a subtle dark smoked undertone.



Whisky (WK)

A light tan mix with dark edging.



Raven Black (RV)

Like the bird, a beautiful reflective black sheen, that comes alive as light catches it.

Leather like all natural materials will change with age, according to the situation, exposure to sunlight and usage (or lack of). The more you use it, the better it looks, the oils from your hands feed the leather and create a unique patina. Leather handles should only be used internally. Please see our leather care instructions for maintenance and cleaning.

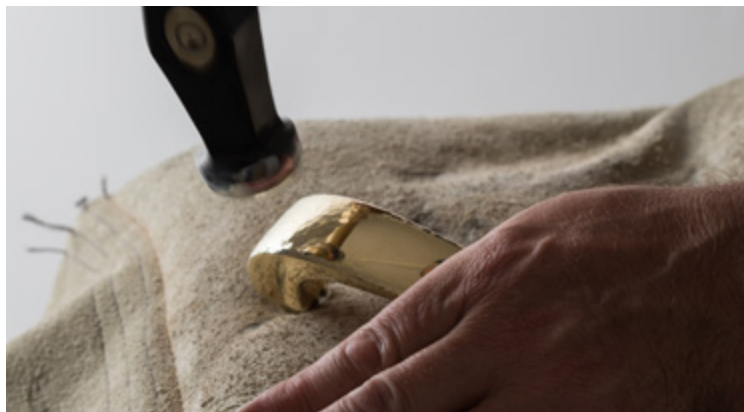
Colour Variation

Vegetable tanning is an art rather than a science, please allow for slight variations in colour from batch to batch, this is all part of the charm of using such a beautiful and natural material.

HAMMERED BRASS



Shown here HS6100 in Bright Chrome



HAMMERED BRASS

Solid brass, hand polished, then carefully and skilfully hammered blow by blow, meaning that every one of our hammered creations are totally unique. Different hammers are used for different shapes, depending on the requirement, flat or rounded, small or large. We have also patinated our hammered finishes differently to help accentuate the pattern and bring out the highlights.

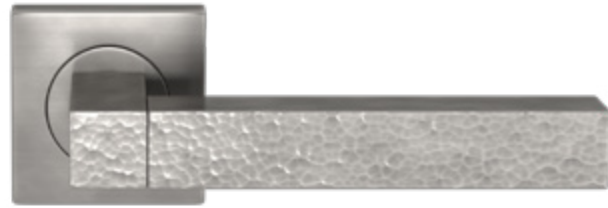
Fully hammered or part hammered we believe our hammering is the best on the market. Bright plated or subtly antiqued, our range of hammered handles will add a truly luxurious element to any interior.



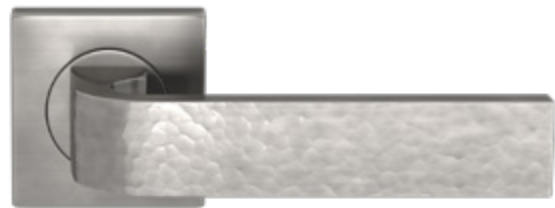
SQUARE HAMMERED

Precision engineered and beautifully hand finished, our collection of square hammered hardware comes in all our hammered finishes.

Shown here in Burnished Nickel.



HS1526



HS1022



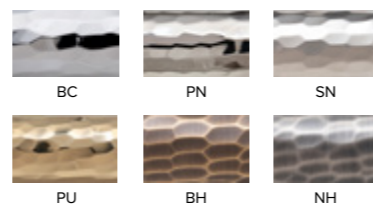
HS5004



HS2233



HS2154



Shown here HS1526 in Bright Chrome



Shown here HS2154 in Burnished Brass, Burnished Nickel (Right)
Photo (Left) courtesy of Panoramic Properties, www.panoramic-properties.com



BARREL

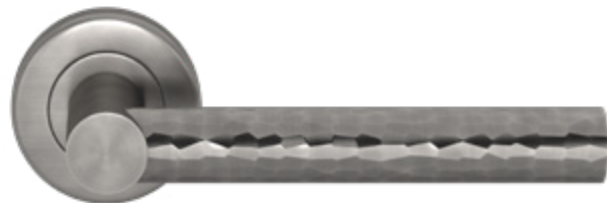
HAMMERED

Individually hammered barrel grips set on a simple, contemporary barrel shaft, a great multi-functioning design. Available fully or part hammered, giving two distinctly different effects. Vintage finishes are hand burnished to bring out the very best of its detail.

Shown here in Burnished Nickel



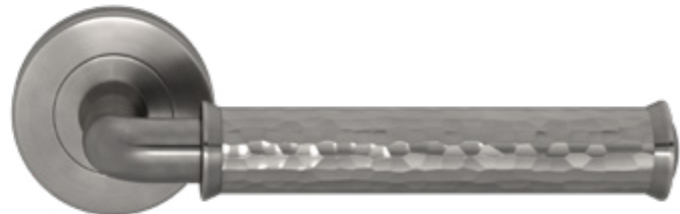
Shown here HS9200 in Burnished Nickel



HS1333



HS2037



QH2700



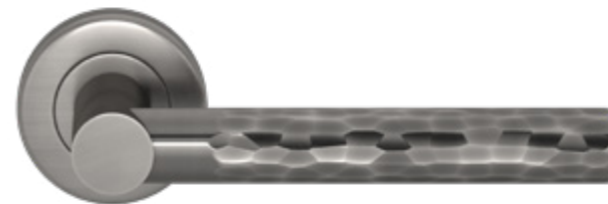
BH3088



HS2017



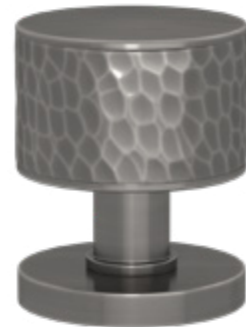
BH3322



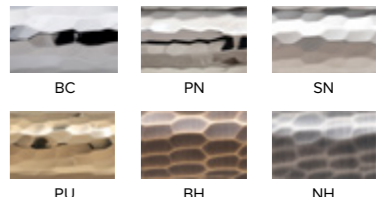
PH7722



PH8100



HS9200



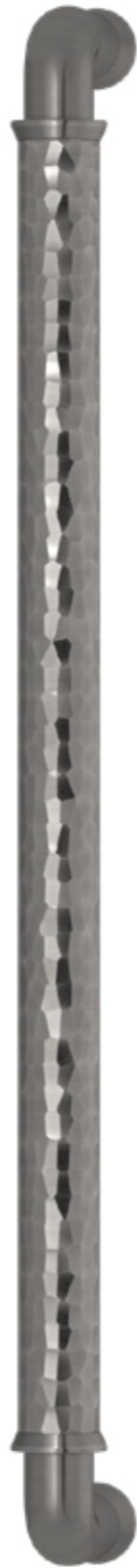
See website for more sizes



HS1340



PH7813



QH4400



QP5000



BH1546

See website for more sizes



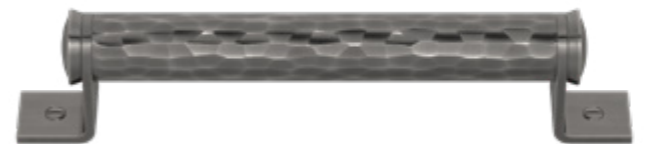
HF1805



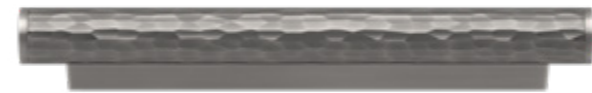
HS1805



BH5599



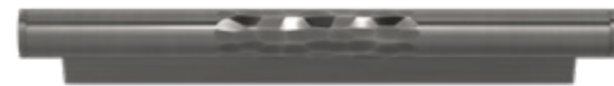
HK3322



HS2231



HS6100



PH7606



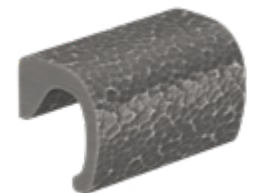
PH7550



HS2090



HS4100



HS1101



Shown here Part Hammered Collection in Polished Nickel

TUBE HAMMERED

Beautifully hand made and finished to create transitional designs suitable for any interior setting.

Shown in Burnished Nickel.



HF3015



HS1332



HS1686



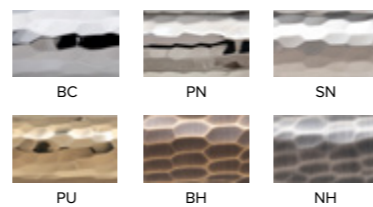
HF1328



HF1600



HF1197



Shown here HF3015 in Burnished Brass

SOLID BRASS



Shown here S1101 in Vintage Patina



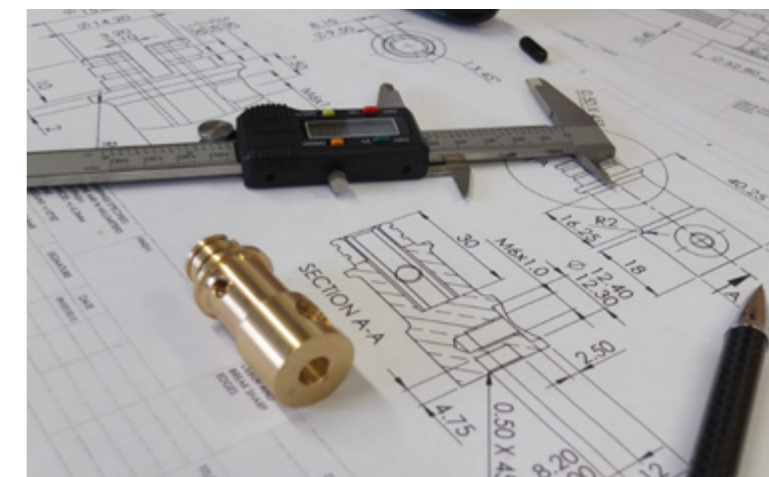
BRASS



HIGH QUALITY

We use a host of manufacturing processes to produce the very best result for each design and product. These include CNC machining, turning, milling, forging, investment casting and extrusion, all carried out by highly skilled precision engineers, ready to go to our finishing department.

We use only the best quality solid brass for all of our production metal work as this is the only material that will allow us to produce such a broad pallet of plated and patinated finishes. We currently produce four stocked plated finishes and five hand patinated "living" finishes as well as many other custom finishes.



SQUARE SOLID

Precision engineered and beautifully hand finished, our collection of square solid brass hardware comes in all our signature solid brass finishes as well as many custom options.

Shown in Polished Brass.



S1526



S1022



S5004



S2233



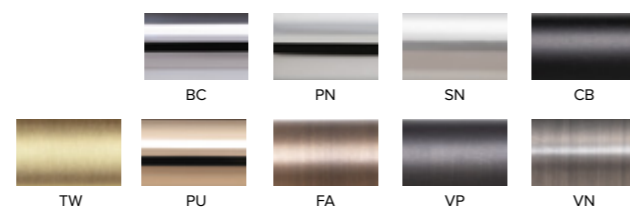
S2154



S2545



S1102



Shown here S1102 - Made to Measure option in Satin Nickel

BARREL SOLID

One of our largest collections and most popular designs, machined from solid brass the Barrel is a modern classic, simple, functional and timeless.

Shown in Polished Brass.



Shown here S2017 in Satin Nickel



S1333



S2037



QS2700



BS3088



S2017



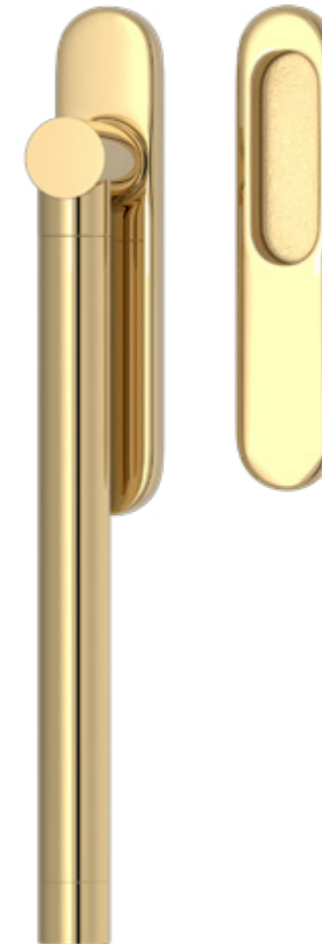
BS3322



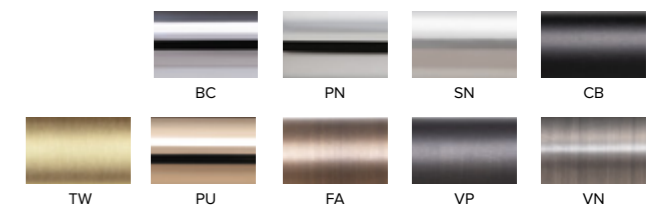
S9200



S2524



S2898



See website for more sizes



S1340



QS4400

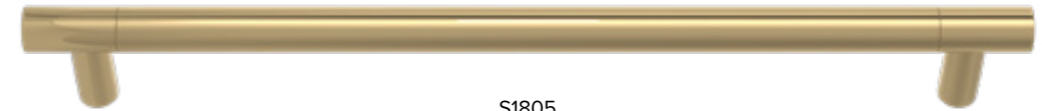


BS1546



SF1805

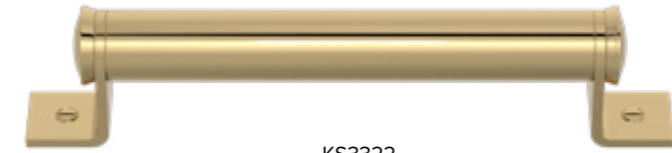
See website for more sizes



S1805



BS5599



KS3322



S1101



S6100



S2231



S1206



S1202



S1204



S4100



S2090



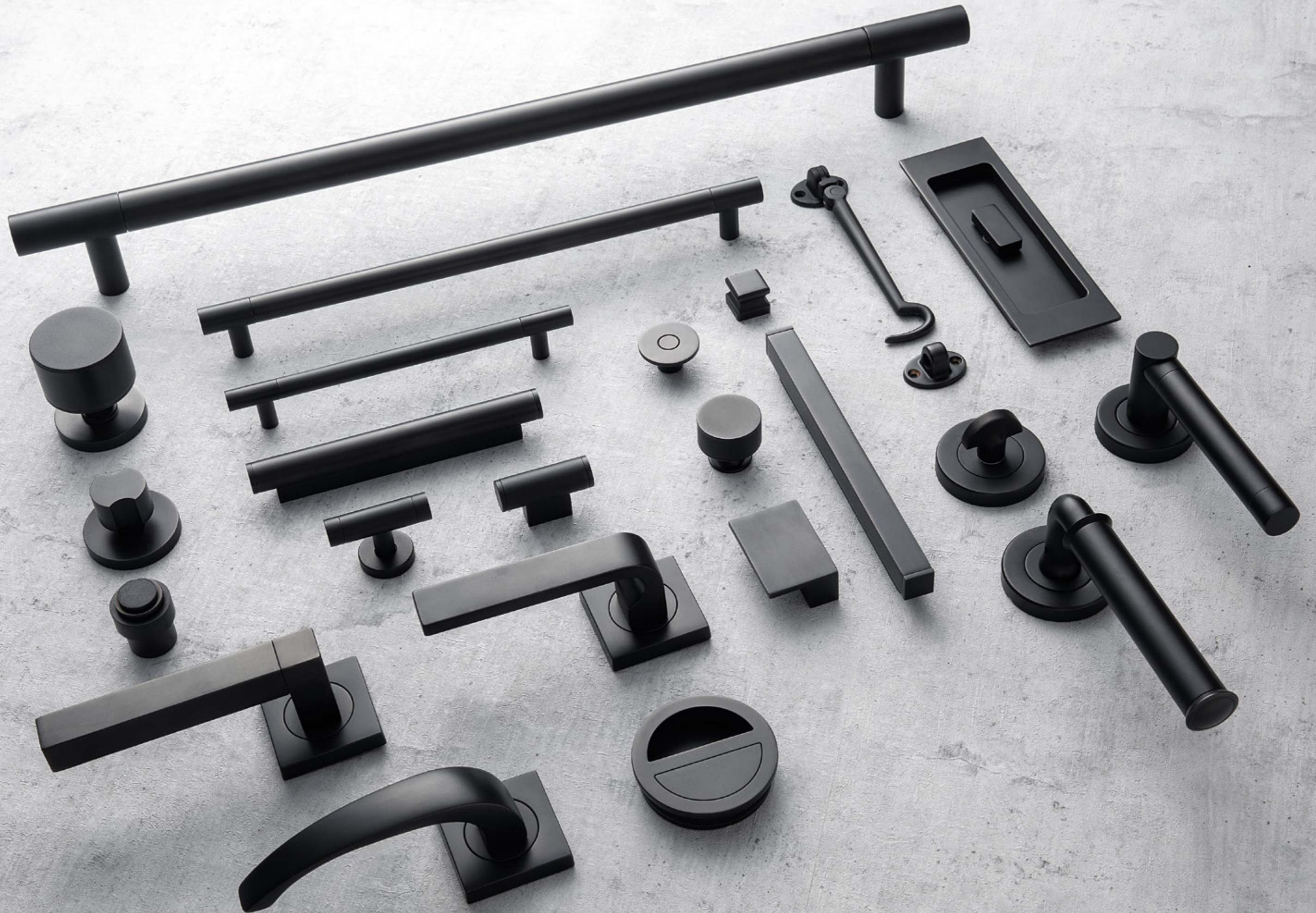
S1150



S1184



S1003



FLUSH PULLS

Our Flush hardware range comes in both our signature Solid brass and Leather finishes as well as Faux leather options. With a turn & release set or pull only versions available, we have kept the design simple and timeless.

Shown in Polished Brass.



S2829



S1954



S1955-Turn



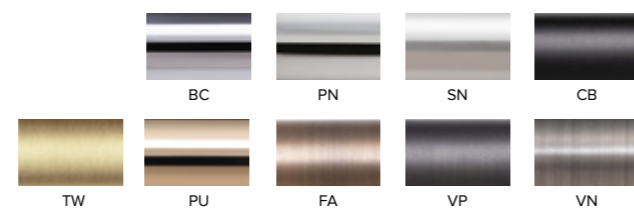
S1955-Release



S1955



S1920



Shown here S1955 in a range of our solid brass finishes

TUBE SOLID

Classic and traditional design with unique additions, available on our Goose neck or Combination shaft, our Tube Solid collection creates soft edges and curved lines in any interior space. The Tube is also available on our smaller more refined Classic rose for a more traditional interior.

Shown in Polished Brass.



SF3015



S1332



S1686



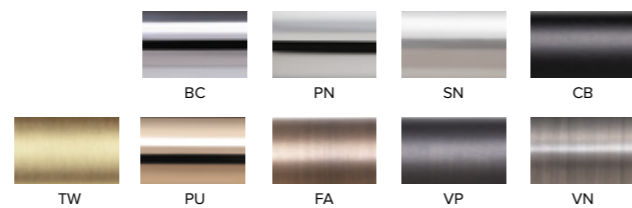
SF1328



SF1600



SF1197

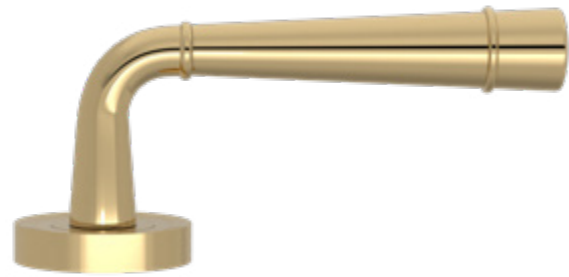


Shown here SF3015 in Vintage Patina
 Photo courtesy of Habitus Concept, www.habitusconcept.com

FLUTE SOLID

An elegant, classic design, machined from solid brass and set on either our Goose Neck or Combination shaft and available with our small face fix classic rose, scallop or 52mm round roses. A great transitional design that will work in more traditional or contemporary settings.

Shown in Polished Brass.



SF3260



SF4455



S5200



S3240



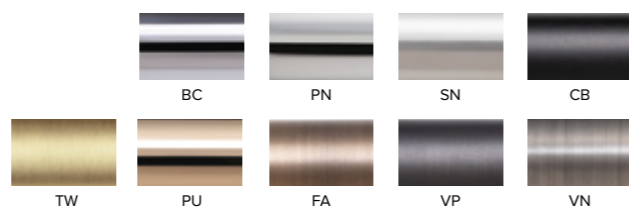
S1686



S7568



S9559



Shown here SF3260 in Matt Black Chrome

COMPLIMENTARY HARDWARE

We produce a comprehensive selection of Escutcheons, Turn and Release sets, Locks, Latches and Hinges as well as many other products to fully complete your projects. A small selection is shown here, please see our website for the full range. Our quality solid brass hardware comes in all our signature finishes to match all our rose profiles, sizes, and combinations.

Shown in Satin Nickel.

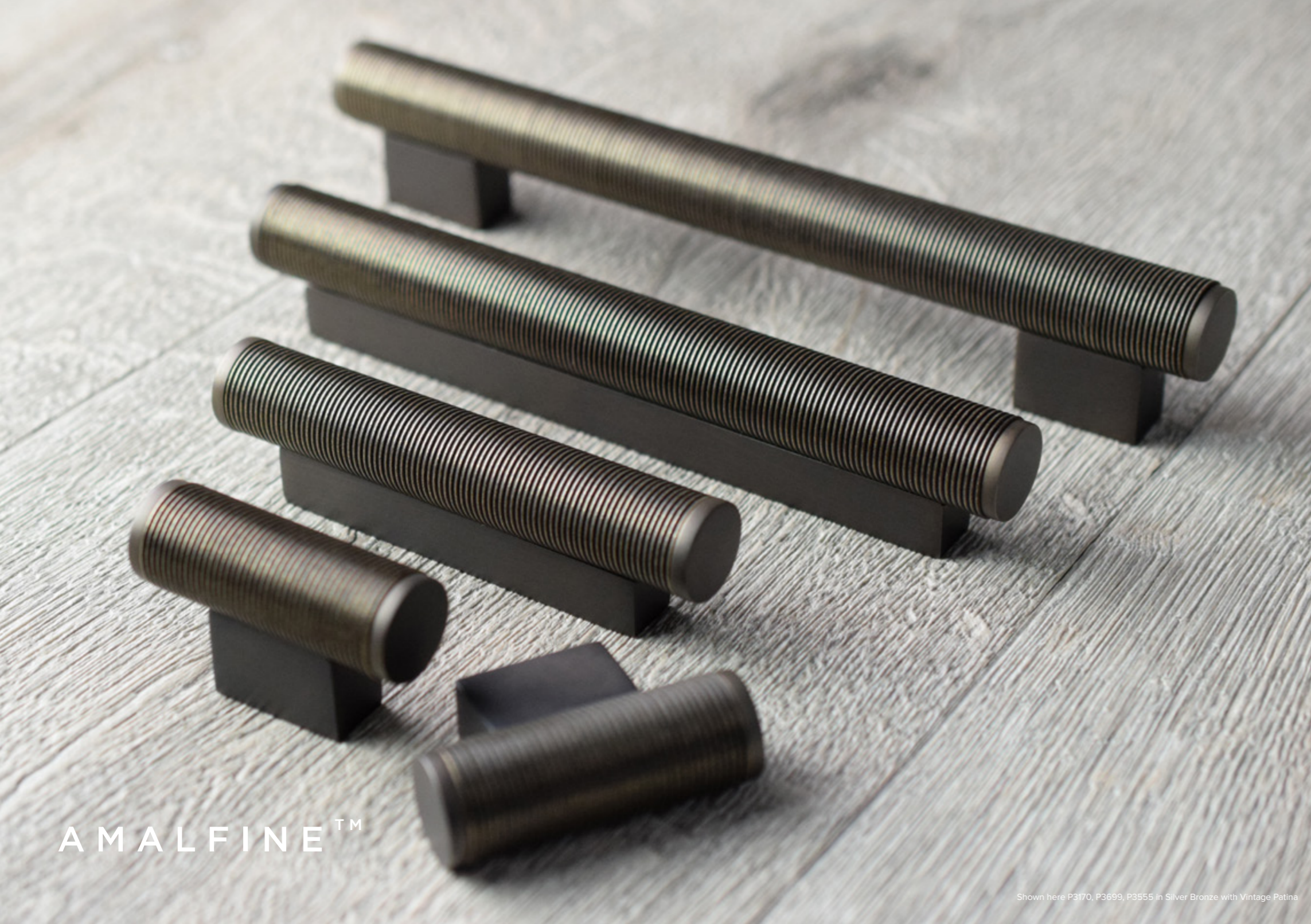


Shown here is a range of Escutcheons as well as Turn & Release sets in Bright Chrome

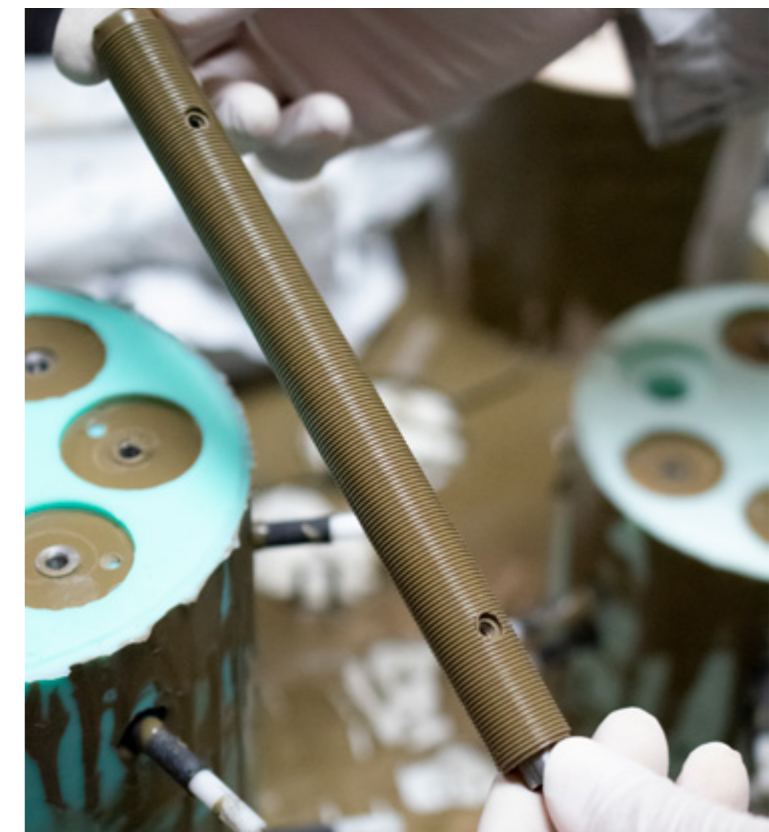
AMALFINE™



Shown here P1019 in Silver Bronze with Satin Brass Waxed



Shown here P3170, P3699, P3555 in Silver Bronze with Vintage Patina



HOW IT'S MADE

First developed in 1992, Amalfine™ is a Turnstyle trademarked material, unique to Turnstyle Designs that has been fine-tuned and perfected over the years to represent over a third of our catalogue range as well as being used extensively in our custom production. Each of our stock finishes are made up from a different recipe of materials, including marble, bronze, aluminium, and a selection of dyes, making each of them a solid composite rather than a “finish”. Each handle design is hand-poured, in liquid form,

into silicone rubber moulds that will pick up fingerprint detail, steel or brass cores are cast in for additional strength and function. The overall process is labour intensive and takes many hours to perfect, but the outcome is both durable, beautiful and extremely tactile. The detail of the process is a closely guarded secret, perfected by our skilled craftsmen and loved by our customers.





SHAGREEN AMALFINE™

One of our best selling designs and a sustainable alternative to real Shagreen (shark or ray skin). This beautifully textured, organic design is hand cast and finished picking up every detail of the original skin it was cast from.

Part of our extensive Shagreen family of products you can firmly complete any interior look with complimentary hardware to match.

Shown in Silver Bronze with Fine Antique Brass.



Shown here Y1669 in Silver Bronze with Vintage Patina



P1019



D2005



DF2988



B1339



D2584



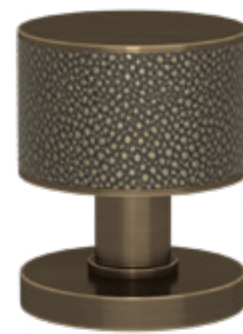
P1912



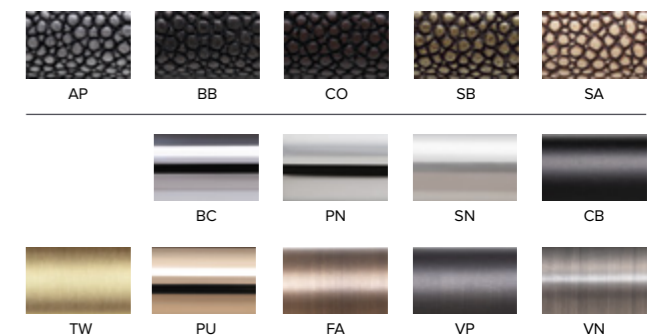
DF2534



P1725



P6702



See website for more sizes



DF2631



P1079



B1553



P1079

See website for more sizes



YF1669



YF1669



YF1973



Y1669



Y1669



Y1973



B5001



P3016



P3697



P3501



P2993



P5098



P8722



P3125



Shown here is P6702 (Left) and DF2631 (Right) in Sand with Fine Antique Brass
Photos courtesy of Mauzart Interiors



Top: Old Hickory Knives
 Top Right: E3551 Alupewt with Satin Nickel, Lever on Rectangle Back Plate
 Left: E3700 Alupewt with Fine Antique Brass
 Bottom Right: E3955 Sand, Black Bronze with Fine Antique Brass



HICKORY AMALFINE™

The Hickory door lever was inspired by the North American hunting knives of the turn of the century, which are still used today, often referred to as “Old Hickory” from the wood that was used for the handles. An incredibly comfortable handle designed with subtle curves to the front and rear. Contemporary and inviting, five beautiful Amalfine™ grip finishes accompanied by our luxury brass.

Shown in Silver Bronze with Fine Antique Brass.



E4466



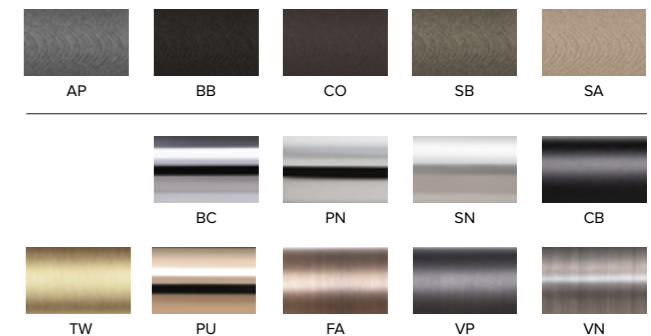
E3500



E3700



E3955



BAMBOO AMALFINE™

A timeless design inspired by one of nature's most durable and versatile materials. Cast Amalfine™ grips in two simple shapes, barrel or the tapered tube, looks and feels just like real bamboo but made from our rich palette of Amalfine™ composites.

Shown in Silver Bronze with Fine Antique Brass.



P2856



D1001



DF3009



D1291



S1421



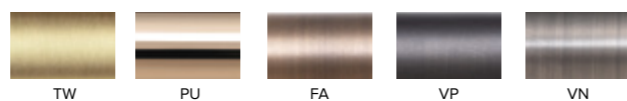
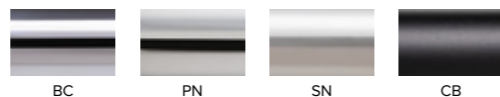
DF1329



P2877



S1041



Shown here DF3009 in Cocoa with Vintage Patina

See website for more sizes



DF1059



P2876



P2876

See website for more sizes



YF2879



YF2879



Y2879



Y2879



P1012

FACETED AMALFINE™

A contemporary design with a nod to the retro. Cast from precision engineered brass masters, Faceted is extremely ergonomic and with a choice of four distinct door levers and a door knob, there is a handle for every occasion. View our website to view the full range in our 36 combinations of finishes.

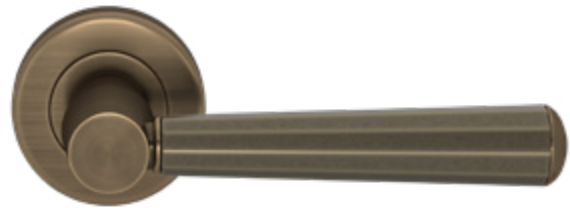
Shown in Silver Bronze with Fine Antique Brass.



Shown here in Black Bronze with Satin Brass Waxed



P1440



D3280



DF3270



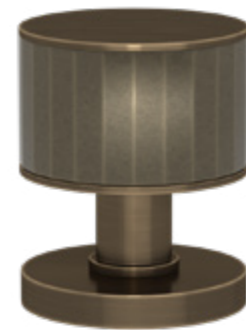
QA4500



D1811



P3408



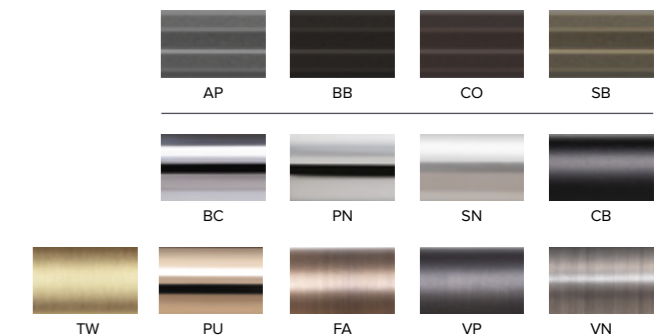
P6200



DF1750



P1845



See website for more sizes



DF1858



P2645



QA4779



P2645

See website for more sizes



YF1250



YF1250



YF3077



Y1250



Y1250



Y3077



KA1902



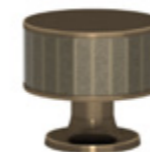
P3022



P3002



P2880



P5050



P8742



P2861



Shown here P1440 in a range of finish combinations

LABYRINTH AMALFINE™



A COLLABORATION WITH WINCH DESIGN

Winch Design is an internationally renowned multi-disciplinary design studio specialising in bespoke yacht, aviation and architecture design at the highest level.

We have worked with Winch for over 20 years on numerous marine and land-based projects and when Steve Roberts, Turnstyle's MD, was approached by founder Andrew Winch to discuss working together, it was clear there was strong synergy between the studios.

Steve was looking to collaborate with a company that would be sympathetic to Turnstyle's unique design style, whilst bringing a new direction and originality. Winch Design takes endless inspiration from the natural world, the spirit of which is embodied in Labyrinth. The design is inspired by a mix of complex geometric and organic tones, mimicking the intricate patterns of brain coral, yet the final effect is reminiscent of a maze. This unique design's namesake, Labyrinth, is a bold, strong design with high visual impact.

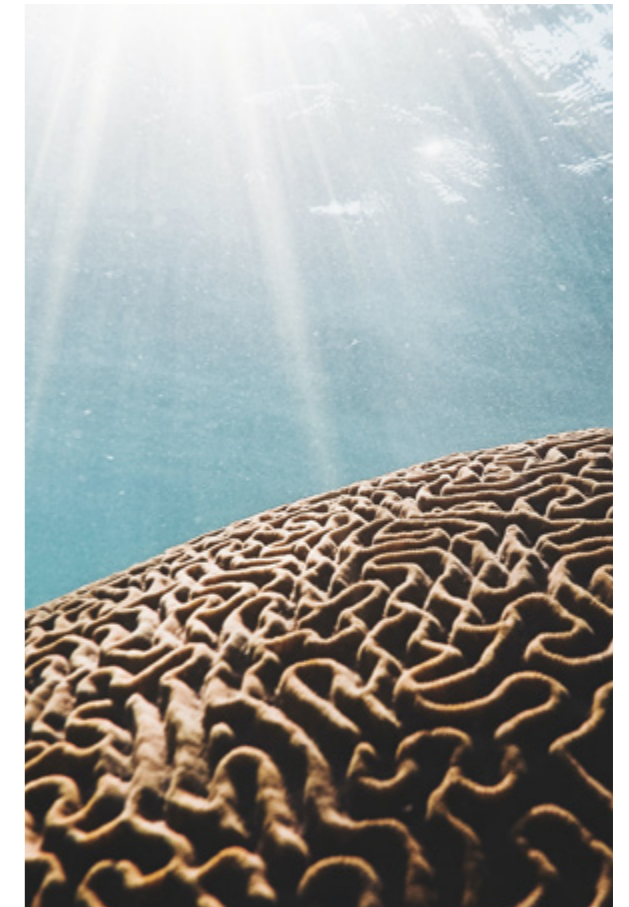
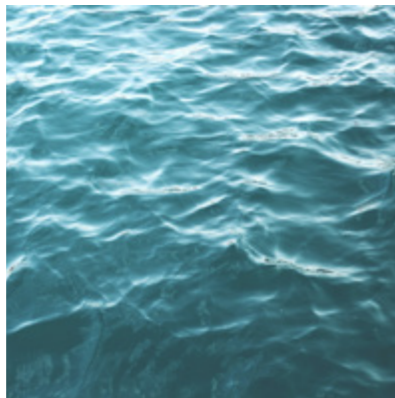
The door lever, which drove the design process, is large, with a 25mm diameter grip, over hung on a stepped shaft and large 58mm rose. Grips are hand cast and finished in our unique Amalfine™ composite and available in five beautiful finishes. These are further complimented by nine variations of distinct metal finishes for the brass work. This gives clients a choice of over 45 finish combinations, as well as custom options.

ABOUT WINCH DESIGN

Winch Design is globally recognised as a power-house of bespoke design at the highest possible level and each project is limitlessly creative and unrestricted by preconceptions, tropes or niches. Each commission is entirely bespoke and the design language of each project is built upon the DNA of the client's dreams.

The Winch team create dream homes on land, in the air and at sea for a discreet and elite client base. Over the past 36 years, Winch has designed and delivered iconic projects all over the globe, that are not only timeless, but have altered the trajectory of UHNW design into the future. The team currently stands at an impressive 140 and the company builds momentum and energy with every new commission to cross the line.

Each project is an immaculate realisation of what is possible when the best creative minds come together and are united by a dedication to authentic design language, ambition, and an unfaltering commitment to excellence.



Left: B7005 in Silver bronze with Fine Antique Brass
Photo courtesy of Azzari, www.azzari.be

Right: Coral inspiration

Bottom: B8254 in Alupearl with Bright Chrome



Shown in Silver Bronze with Fine Antique Brass.



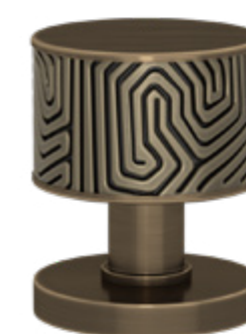
Shown here is our Labyrinth Collection in Silver Bronze with Polished Nickel



B7444



B7005



B9303



B8254



B7521



B9222



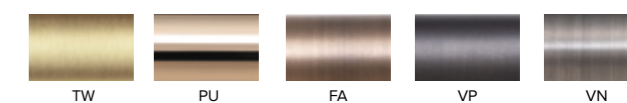
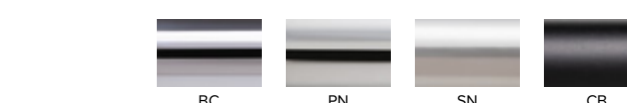
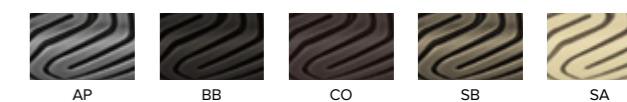
B9009



B8108



B9322



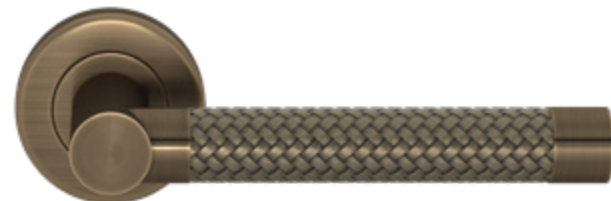
WOVEN AMALFINE™

An Amalfine™ version of our Woven leather, incredibly realistic and detailed. This design looks especially good in our Alupewt or Silver Bronze finish.

Shown in Silver Bronze with Fine Antique Brass.



Shown here KA1442 in Alupewt with Vintage Nickel



P2765



D1182



DF1175



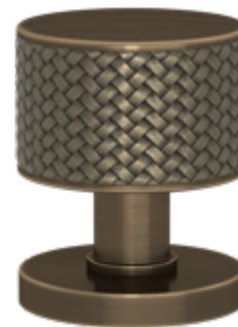
B1407



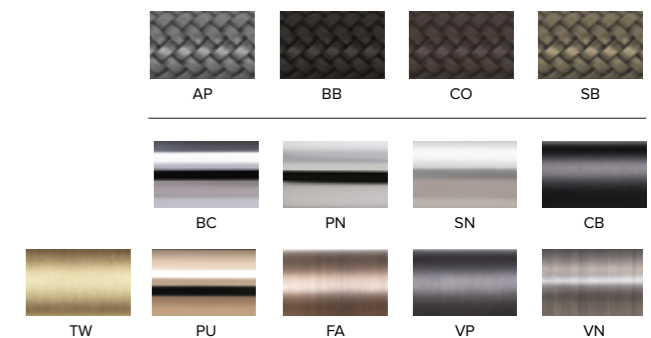
P2230



B2010



P6711



See website for more sizes



DF1199



P2822



B1887



P2822

See website for more sizes



YF1168



YF1168



YF3250



Y1168



Y1168



Y3250



B5698



KA1442



P3520



P5011



P3030



P3699



P3130



Shown here is P3520 in Black Bronze with Polished Brass
Photo courtesy of Neatsmith, www.neatsmith.co.uk



ROUGH CUT AMALFINE™

An old favourite and featured in some of the best interiors in the world. Inspired by a rough hewn timber, this design has been tempered to create a beautiful rippled textured effect. Available with a choice of complimentary hardware to match any chosen finish.

Shown in Silver Bronze with Fine Antique Brass.



P1015



P1099



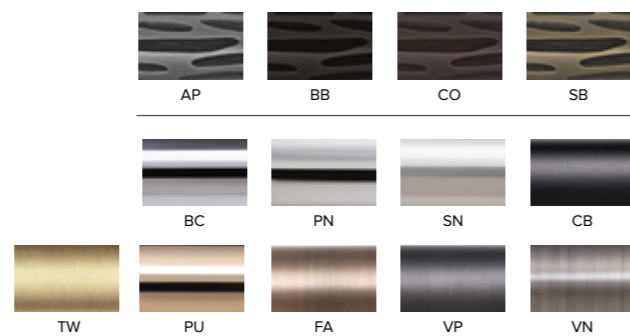
P2359



S1041

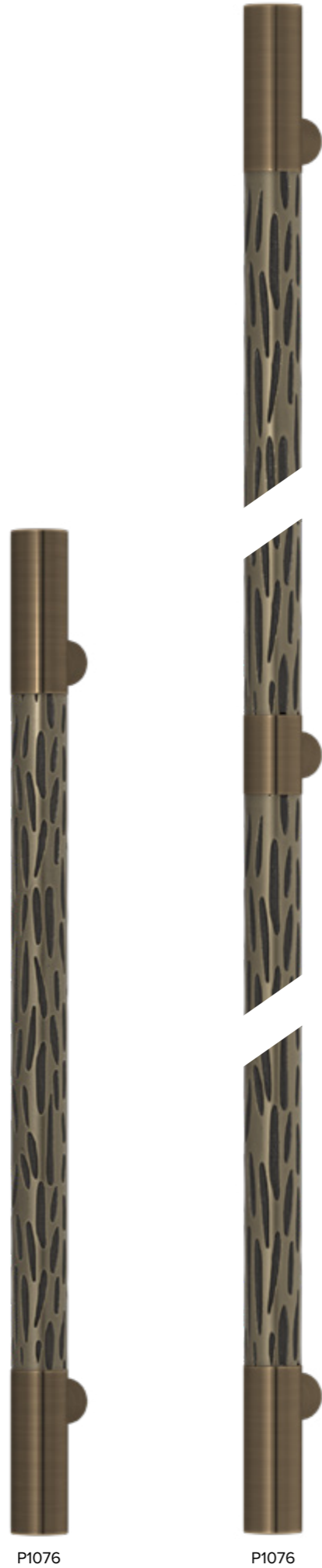


X7000



Shown here Y1161 in Alupewt with Satin Nickel

See website for more sizes



P1076

P1076

See website for more sizes



YF1161



YF1161



Y1161



Y1161



P1013



P3702



P3512



P3155



Top: QA2020 in Black Bronze, Bright Chrome
 Left: Classic British motorbike, the Norton
 Right: QS2020 in Matt Black Chrome

NORTON AMALFINE™

A large, bold design with a deeply grooved grip, creating a tactile feel, much like grabbing the handle of a motor bike from where the design and name was inspired. The design is set on our new Pipe door lever shaft and comes in four different Amalfine™ finishes, as well as Solid Brass. Detailed with complimentary classically lined caps and collars, this design is both bold and robust, making the perfect statement piece.

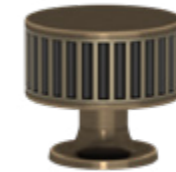
Shown in Silver Bronze with Fine Antique Brass.



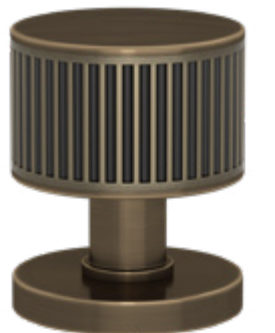
QA4802



QA2020



P1189



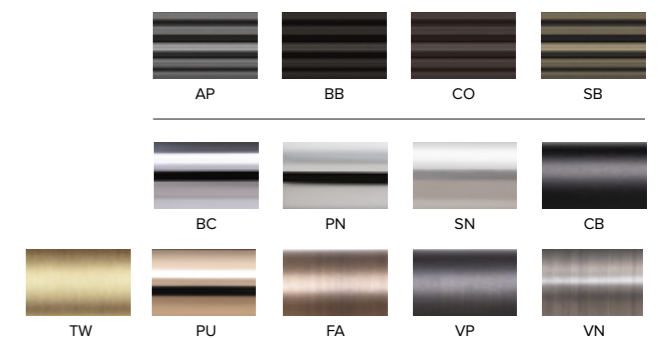
P1700



QA3909



S8007





Shown here all Stepped Door Lever designs in Cocoa, Chocolate Leather with Fine Antique Brass

WIRE AMALFINE™

This industrial style design stands out for its coiled wire grip which is hand cast in Amalfine™. Inspired by a 1950s industrial lamp fitting that she came across in an antiques fair, Christina Roberts designed this to compliment the Industrial Chic trend in Interiors that continues from year to year. The handles are ergonomic and work well in most contemporary spaces, both commercial and residential.

Shown in Silver Bronze with Fine Antique Brass.



P2702



QA4222



B1355



S1422



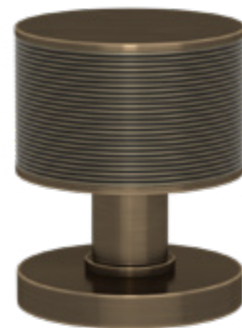
S1042



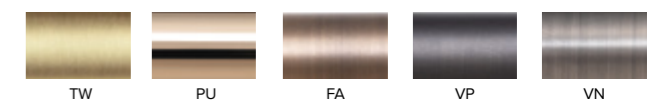
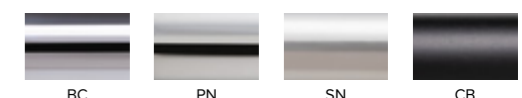
P2361



P3200



P6587



See website for more sizes



P2991



QA4935



B1622



P2991

See website for more sizes



YF1166



YF1166



YF3200



Y1166



Y1166



Y3200



B5440



P3008



P3036



P3710



P5082



P8755



P3555



KA1001



P3170



Shown here: Bracket Cabinet Pull in Alupewt, Slate Grey Leather, Vintage Nickel & Burnished Nickel

FLUTE AMALFINE™

A simple, elegantly tapered grip, highlighted with a subtle decorative brass ring to co-ordinate with the body and rose. The natural taper of the lever, along with the ring, was also carried through into two cabinet knob designs which have recently been added to this range.

Shown in Silver Bronze with Fine Antique Brass.



DF4455



S5200



DF3260



S3010



D3240



S1041



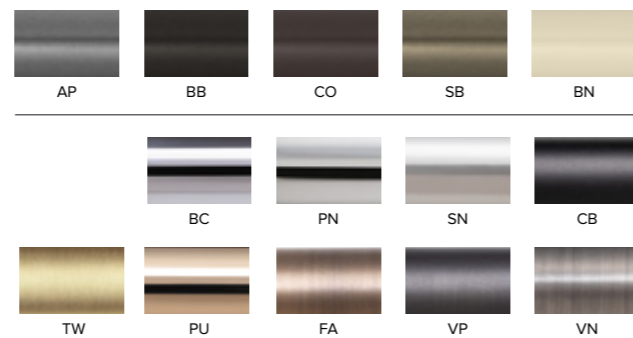
D4001



D6633



D5569



Shown here D4001 in a range of Amalfine™ and brass finishes

BARREL AMALFINE™

The mainstay of the Turnstyle Designs design collection, Barrel is available in all our materials and all finishes, Amalfine, Solid, Hammered and Leather, mix and match or co ordinate throughout.

Shown in Silver Bronze and Fine Antique Brass.



Shown here B5231 in Cocoa with Fine Antique Brass



P1333



P2771



B1202



P4224



P2244



P2017



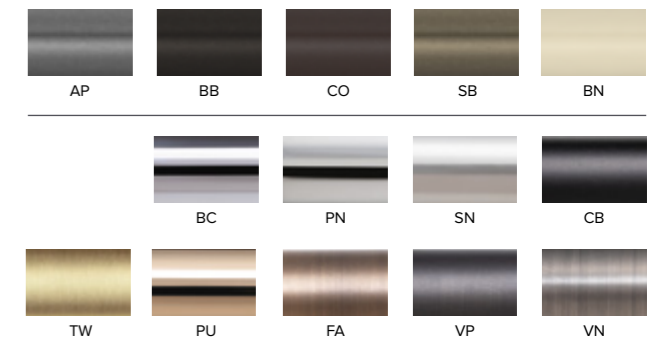
B2044



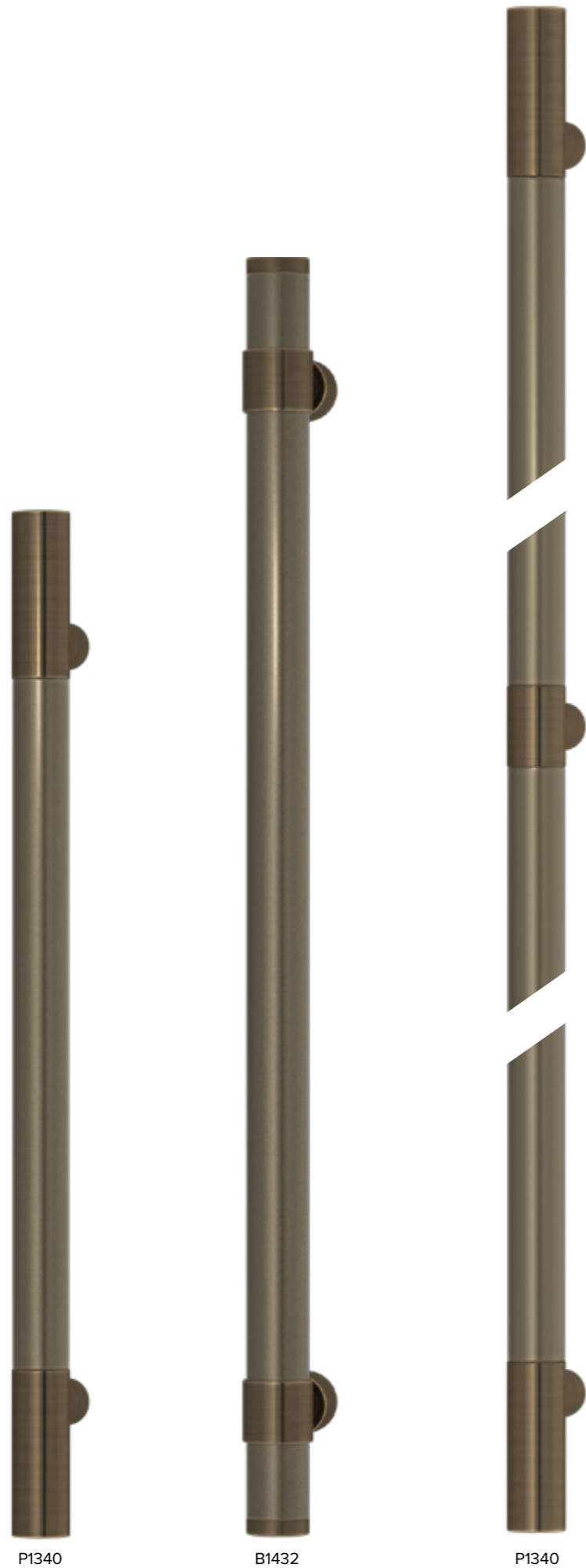
P1408



P3402



See website for more sizes

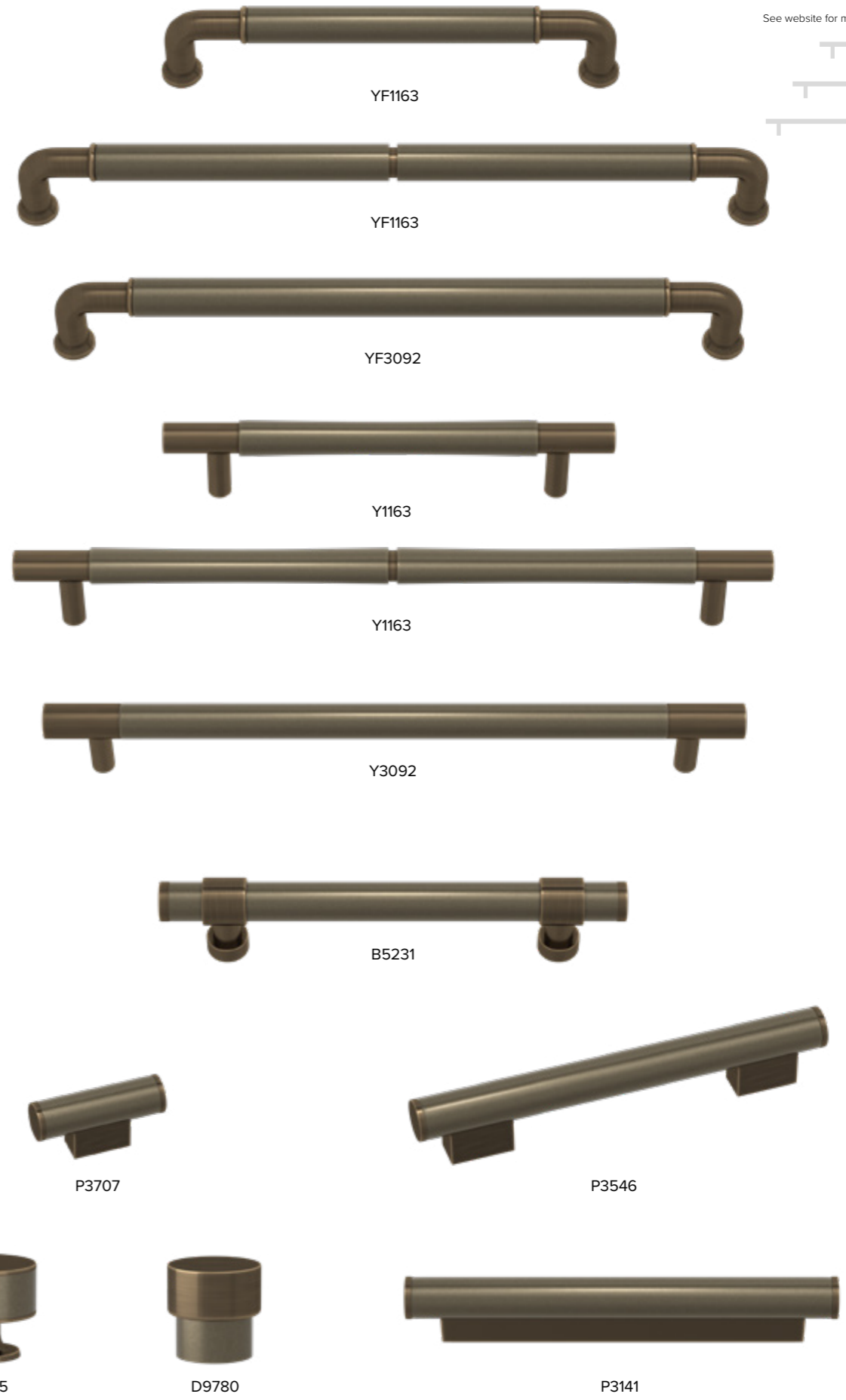


P1340

B1432

P1340

See website for more sizes



YF1163

YF1163

YF3092

Y1163

Y1163

Y3092

B5231

P3707

P3546

P5065

D9780

P3141

TUBE AMALFINE™

Elegant and traditional, our Tube design lends itself perfectly to either our scalloped or classic rose options and has a subtly tapered end. The sleek Amalfine™ grips are also available in our Bone finish, which is kept only for our smoother styles.

Shown in Silver Bronze with Fine Antique Brass.



DF3015



D1332



D7568



D1686



DF1328



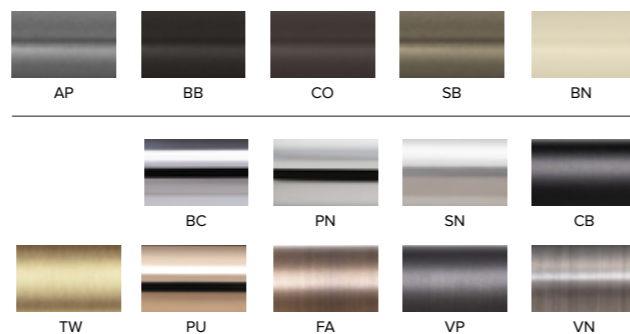
DF1600



D9099



D8159



Shown here D7568 in Alupewt with Satin Nickel

LEATHER



Shown here QL2004 in a range of our leather finishes with Fine Antique Brass



LEATHER

HAND STITCHED

Our leather is sustainability sourced and produced from some of the finest tanneries in the world, in Tuscany, Italy. We use only the very best full grained, vegetable tanned, drum dyed, bridle or saddle leather, certified sourced from European origins. Tanned with natural vegetable tannins that have been used throughout the ages, producing the most durable and beautiful leather available.

Our extensive range of leather handles are hand stitched by our team of highly skilled leather craftsmen.

Years of training is invested to produce the level of craftsmanship used to produce our leather hardware and between them they have over 22 years' experience. Have a look at our production videos on the website to learn more.

Leather like all natural materials will change with age, according to the situation, exposure to sunlight and usage, or lack of. The more you use it, the better it looks, the oils from your hands feed the leather and create a unique patina. Like an old handbag or briefcase the character of the leather gets richer with age.

Our range of leather handles are available both stitched and bonded allowing for a greater choice. Our team are also trained in using different versions of leather and other materials for many of our custom projects.

Read more about how you can personalise our leather handles on our Custom page.



Shown here Barrel Stitched Collection in Chocolate Leather with Fine Antique Brass

SQUARE LEATHER

Contemporary square profile with edges hand polished for a softer grip. Available both Stitch In or Stitch Out, hand stitched in our Devon factory. All our leather handles are made from the finest Italian leather, the vegetable dyeing process means the colour runs deep throughout and is not just a surface finish.

Shown in Chestnut with Satin Nickel.



R1025



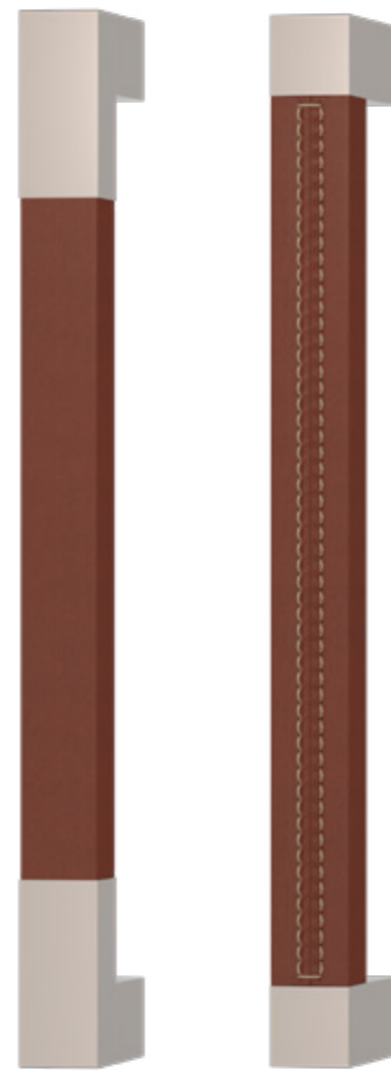
R1021



R1941

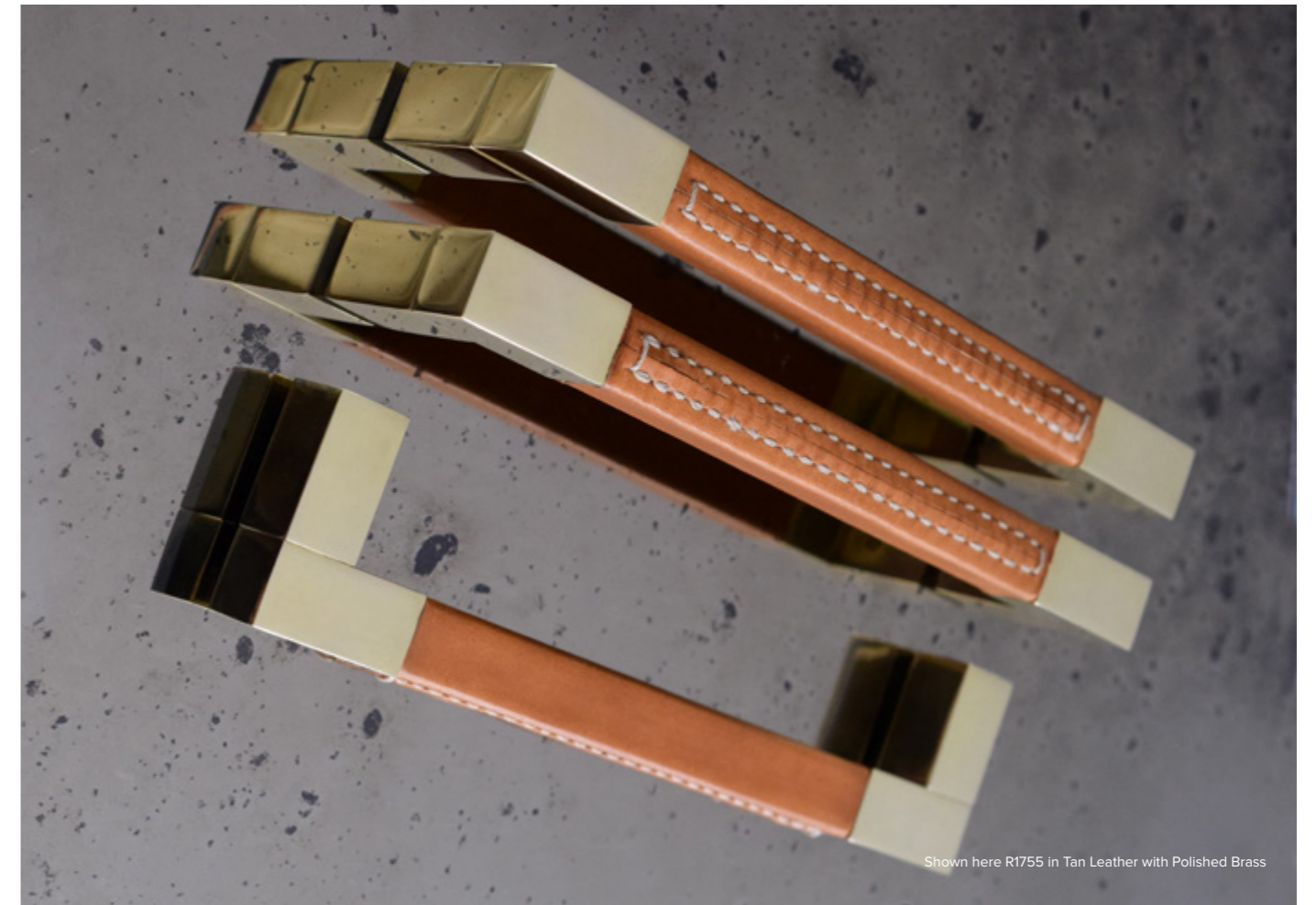
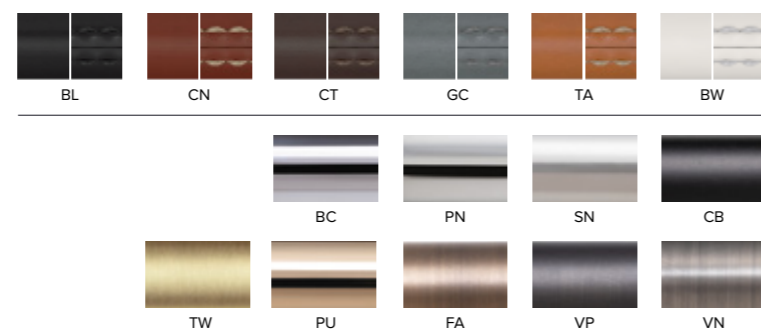


R2030

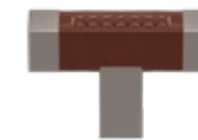


R1067

R1074



Shown here R1755 in Tan Leather with Polished Brass



R1929



R1199



R2154



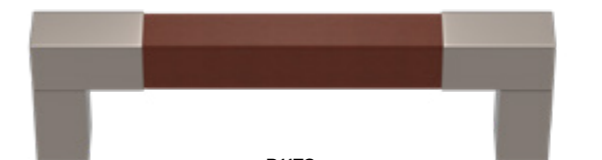
R2234



R2233



R1755



R1173



U1684



UP1684



Shown here U1189 in Chestnut Leather with Satin Nickel
Photo courtesy of Naked Kitchens, www.nakedkitchens.com

BARREL LEATHER

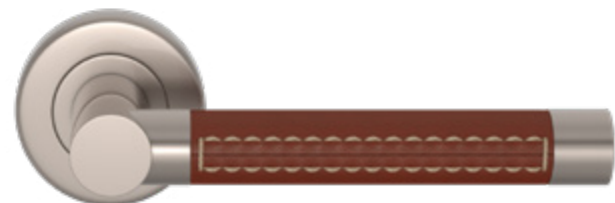
STITCHED

Hand stitched leather is like beautiful penmanship, every stitch is made with skill and care by our team of expert finishers. Our luxury Italian leather makes for a beautiful canvas on which the threads sit and join every hand cut piece together around our popular Barrel shape.

Shown in Chestnut with Satin Nickel.



Shown here R1075(45) in Black Leather with Satin Nickel



R1024



R3073



R1023



R1911



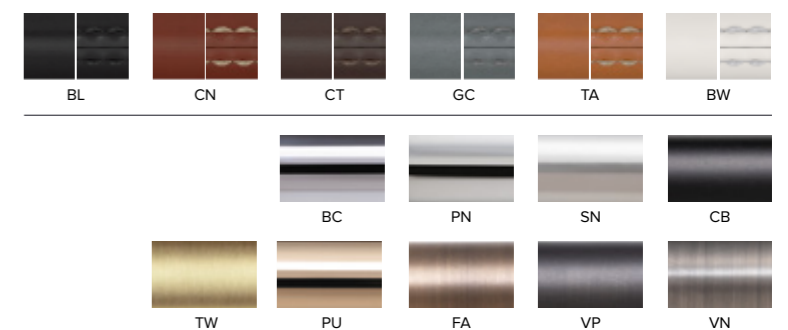
R4224



R2555



R2553



See website for more sizes



R1133



R1073

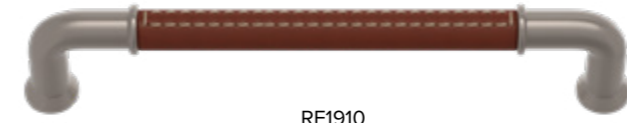


R1075



R2598

See website for more sizes



RF1910



RF1512



R1910



R1512



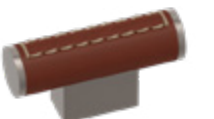
H1190



R1928



R1026



R4150



KL5787



R1285



R2232



Shown here R1018 in Black Leather with Polished Nickel
Photo courtesy of Gradans Hardware, Project - Harvard Hall, www.gradans.co.uk

BARREL LEATHER

Available in either our Stitch In design, hand stitched by our team of excellent leather craftsmen, or precision bonded with a barely visible join is our Barrel Leather collection. Recessed into the brass, each design is clean and sleek creating an overall beautiful finish and look for any interior.

Shown in Chestnut with Satin Nickel.



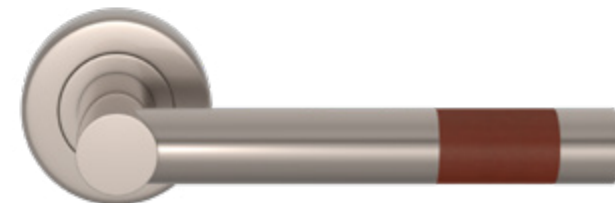
Shown here Chocolate Leather with Fine Antique Brass



R1018



R3083



R1020



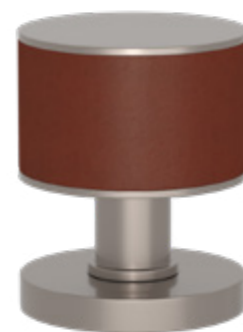
BL5060



R1913



BL5099



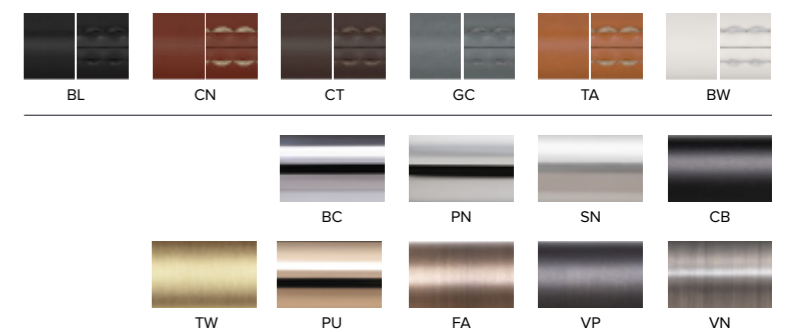
R4224



R2554



R2552



See website for more sizes



R1120



R1069



R1070



BL3874



R2645

See website for more sizes



RF1197



RF1300



R1197



R1300



R1027



R1198



T1495



R5065



R9202



R4100



KL5099



R1301



BL8080



R2231

WOVEN LEATHER

Seamless woven leather tubes, bonded to a metal core and capped with brass. Luxury door hardware at its best.

Shown in Tobacco with Satin Nickel.



R2076



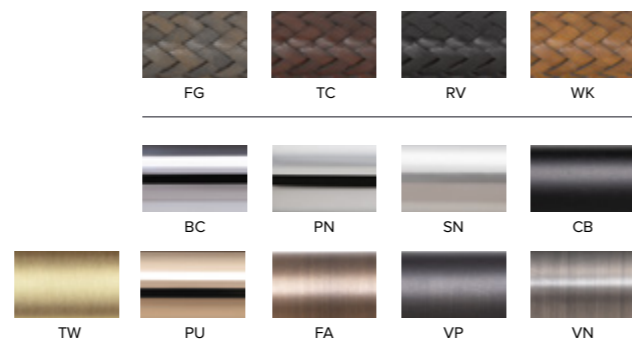
R2531



R2235



R2077



Shown here R2076 in Tobacco Woven Leather with Bright Chrome



Shown here QL2004 in Chocolate Leather with Polished Nickel



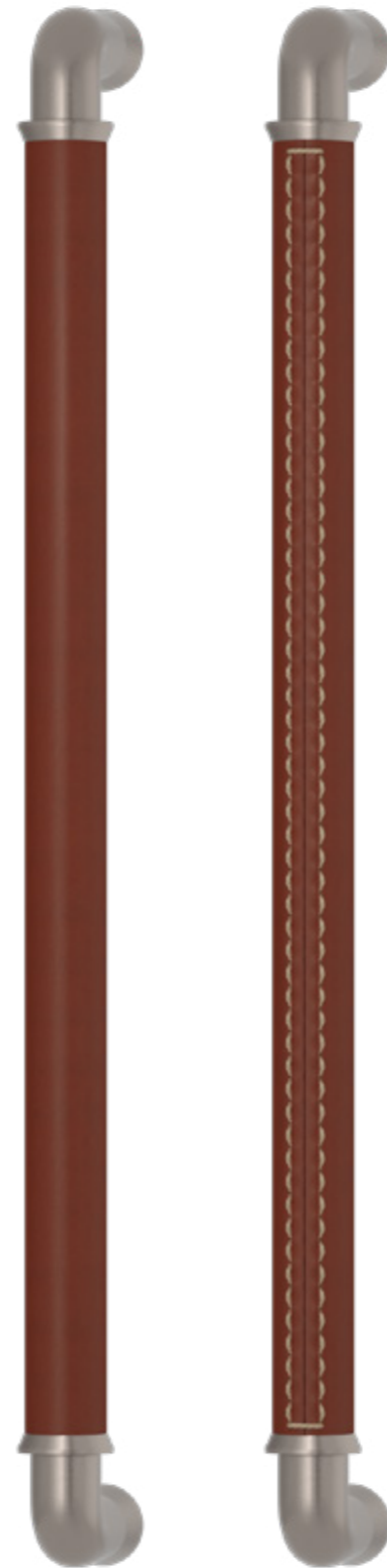
Shown here QL2242 in Black Leather with Matt Black Chrome

BONNEVILLE LEATHER

Designed by Christina Roberts, these large, bold designs were inspired by the classic British motorbikes of the 1950s, using the same Pipe shaft and caps, but with a smooth barrel grip, available in all of the Leather finishes, Solid Brass or Hammered Brass.

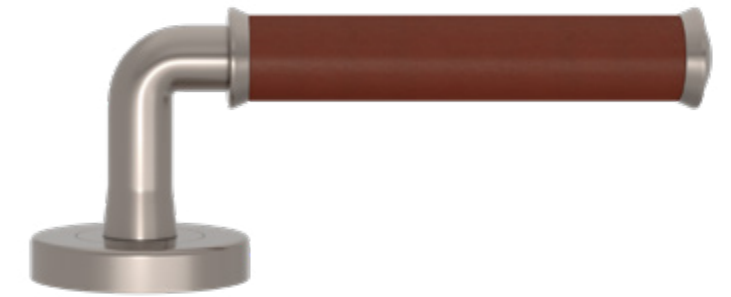
Bonneville has an impressive 75 different finish and material combinations, allowing for customisation on a very personalised level.

Shown in Chestnut with Satin Nickel.



QL2808

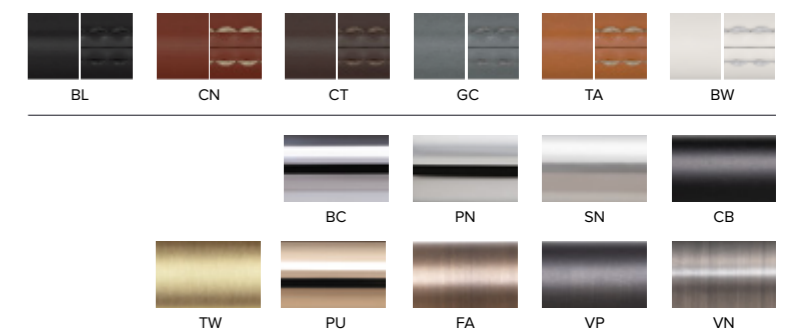
QL4569



QL2242



QL2004



TUBE LEATHER

Perfectly finished slim tube grips dressed with hand stitched, Italian, bridle leather. Available in all our six signature leather finishes, in both Stitch in and Stitch out designs, all our hardware is made to last and comes with a lifetime guarantee.

Shown in Chestnut with Satin Nickel.



CF2992



CF2987



C1012



C1000



CF1608

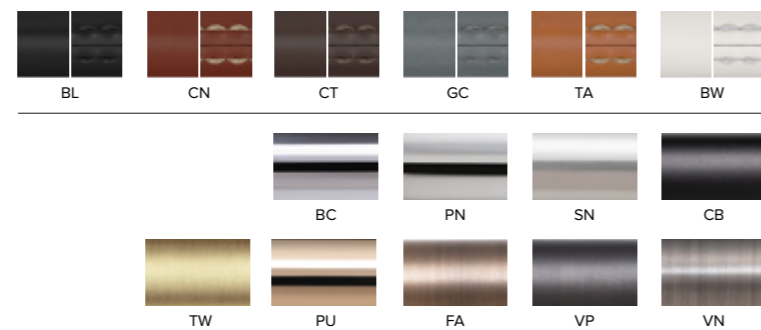
CF1611



C1290



C1481

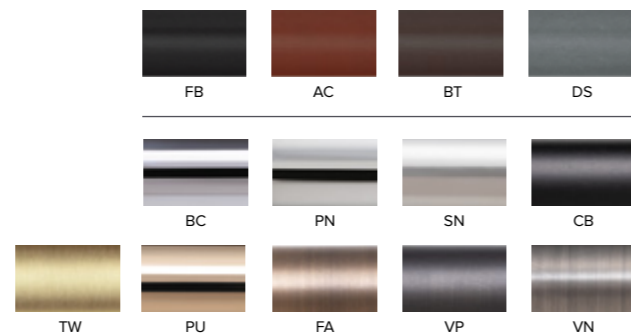


Shown here C1012 and S1422 in Chestnut Leather with Satin Nickel
Photo courtesy of R.Bergersen, www.sogd.no

LEATHER FLUSH PULLS

These stunning flush pulls are designed to sit flush into any sliding door, creating clean and finished lines throughout any interior space. A modern and popular choice for space saving, we have taken our sliding door hardware to the next level by using a faux leather inlay to prevent marking from fingernails. Our faux leather options come in exact matches to our real leather colours.

Shown in Attache Cognac with Satin Nickel.



Shown here all faux leather Flush pulls in Finesse Black with Bright Chrome

CUSTOM SOLUTIONS





MADE TO MEASURE

Our Made To Measure service was born from a growing need to provide bespoke sizing solutions for our clients. More than 35% of our business now comes from customisation.

We have a range of products available in custom lengths and these can be identified by our Made To Measure icon on the relevant products pages.

As well as custom lengths we also have a range of Multi Grip options which is unique to Turnstyle Designs.

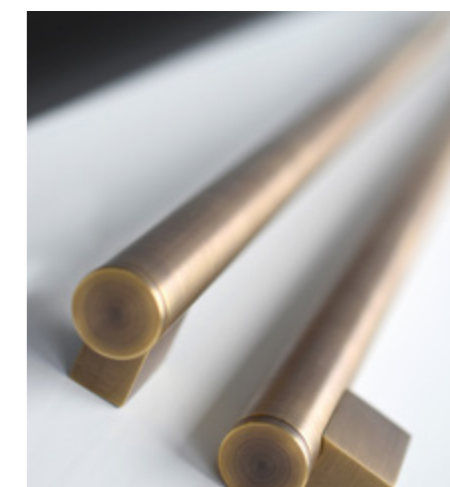
What is a Multi Grip?

Multi Grip is a term we use here at Turnstyle Designs to describe our larger multiple grip sectioned pull handles.

These can be used for larger or more frequently used doors or entrance doors to create a more substantial grip and statement. At present all our Recess Amalfine™, Recess Leather, Solid and Hammered Brass pull handles are available as part of our Multi Grip range. Our current Multi Grip centre size options are 800mm, 1200mm and 1600mm.

To find out more, contact our sales team who will be happy to discuss any enquiries you may have.

+44 (0) 1271 325 325 | sales@turnstyledesigns.com





Shown here is a custom 'Made To Measure' S1197 in Bright Chrome
Photo courtesy of Tom Howley Kitchens, Harrington Collection, www.tomhowley.co.uk



TAILOR MADE

Our Tailor Made service offers even more with complete custom options available to suit any interior.

Working with a myriad of materials, finishes and processes, our years of experience in design and production mean we are well equipped to solve most challenges thrown at us.

If you are not able to find something to suit your project in either of our catalogues or via the Modify process, we will happily discuss developing and manufacturing your vision from start to finish.

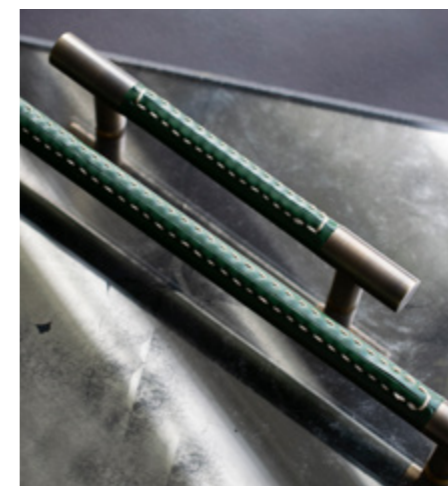
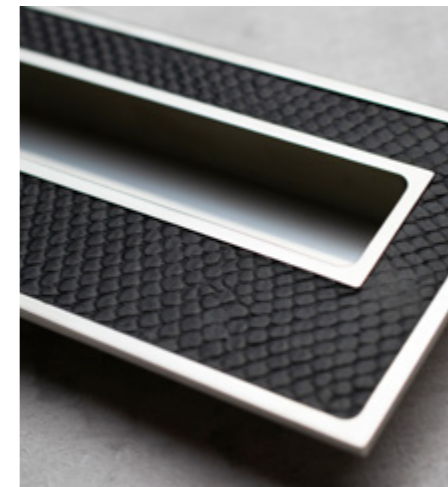
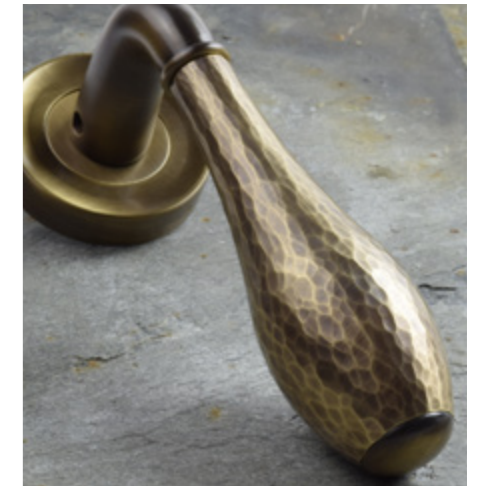
We have the capabilities and know-how to manufacture most types of door hardware, however complex, and have been the manufacturer of choice for some of the most prestigious and demanding clients in the world, including several superyacht builders. We understand the demands put on door and cabinet hardware and will ensure that your design not only looks amazing, but it is also built to last and function smoothly.

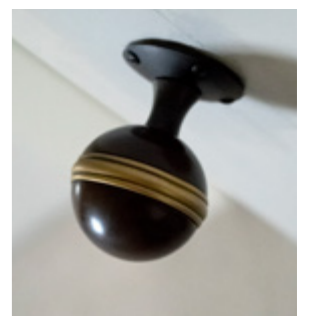
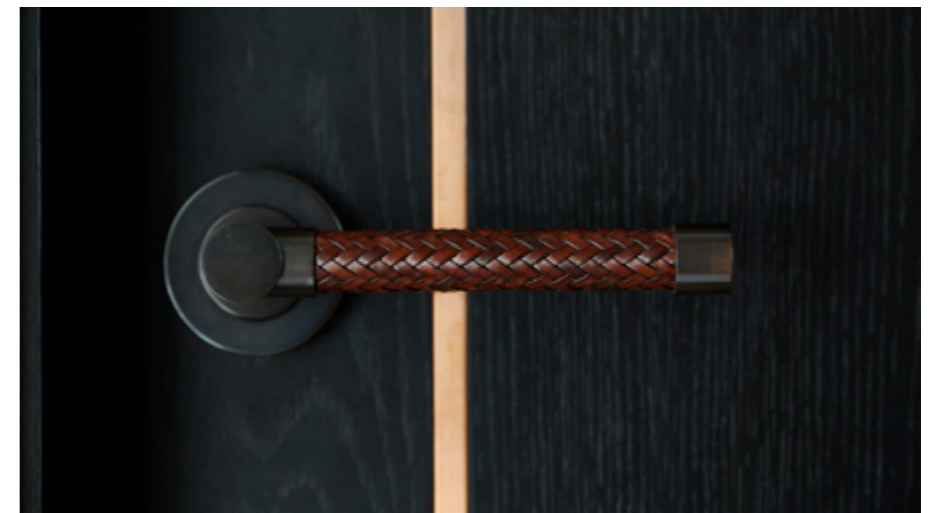
MODIFY

We offer modification and customisation options for clients, by using our existing stock components. This is a cost-effective way to enable a client to have a unique, bespoke design by modifying material, grips or finish and thereby benefiting from both price and delivery times.

Our customers are used to being able to put their own handwriting on most products they buy, from cars to suites and furniture, so why not architectural hardware? We offer a completely bespoke service where you can either take one of our existing designs and customise it by size, finish or even casting, or if you still can't find something that suits, work with us to create something completely unique for you.

Our Modify service allows customers to take an existing product and specify exact custom lengths for cabinet D handles and door pulls, free issue their own leather or even stitch options, choose a specific metal finish – plated or patinated or have their own Amalfine™ grip design cast and finished. This service uses stock parts to manufacture custom pieces which help speed up delivery and cut down costs.







WHERE TURNSTYLE MEETS THE SEA

A significant amount of our business comes from the superyacht industry. We have been working with yacht designers and builders for over 20 years and we thoroughly understand the industry.

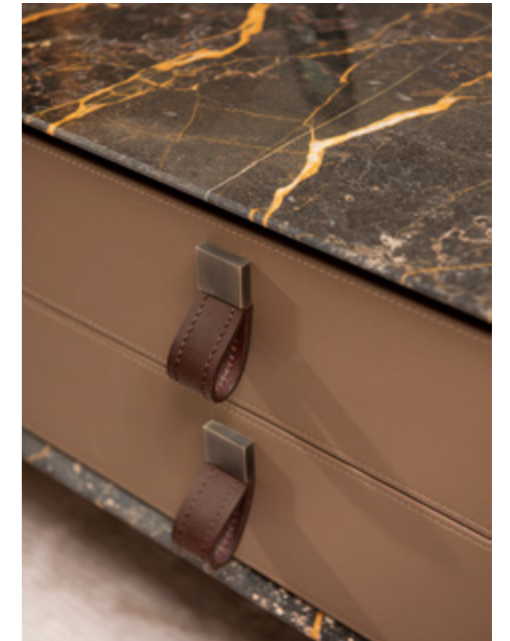


Owners of superyachts commission the best yacht designers in the world to create imaginative and incredible interiors. Our marine department takes care of their every need, more than often working to create a large range of custom hardware for each boat. From ensuring the designers vision is realised to solving the practical issues of what is a very demanding environment, our team delivers highly complex projects time after time. The amount of repeat business we enjoy in this industry is testament to our quality and service.

From beautifully engineered solid brass Lux Latches to profiled fiddle rails, we can produce the full range of marine hardware in virtually any material and finish, made in England to the very highest standards. The only limitation is your imagination.



Page 152 & Left: Images courtesy of Mark Berryman Design, My Life Saga
www.markberrymandesign.com
Below Right/Below: Images courtesy of Alia Yachts, Al Waab
www.alia-yachts.com



“After over 20 years in the marine industry, the design process and creativity involved in designing a super yacht is massively impressive. Our relationships with designers, yards and IOCs, built over many years, allow a glimpse into this environment which demands the best execution of their vision.” Alex Foster, Senior Sales Manager



LATCHING HANDLES

Used extensively in the marine industry and on many of the superyachts we supply, these are simple, ingenious ways of keeping cabinets shut and secure. They are a perfect way to keep cupboards shut, smarter than magnetic or friction catches and much longer lasting.

Shown in a variety of designs in Satin Nickel, as well as Chestnut leather.



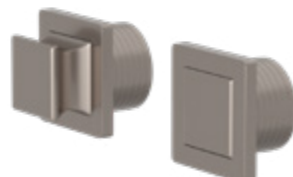
S3044



S3045



S3046



S3049



Lux push button latch
PLK210



Stitched U1440
Plain UP1440



Stitched U1200
Plain UP1200



Stitched R7570
Plain R6500



H2009
Only available in BC



S7002

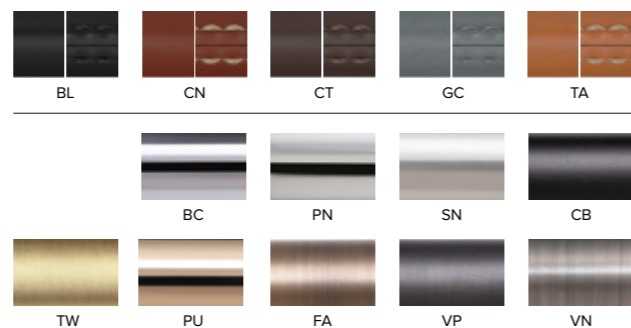
See website for more sizes



S1989



HS1989

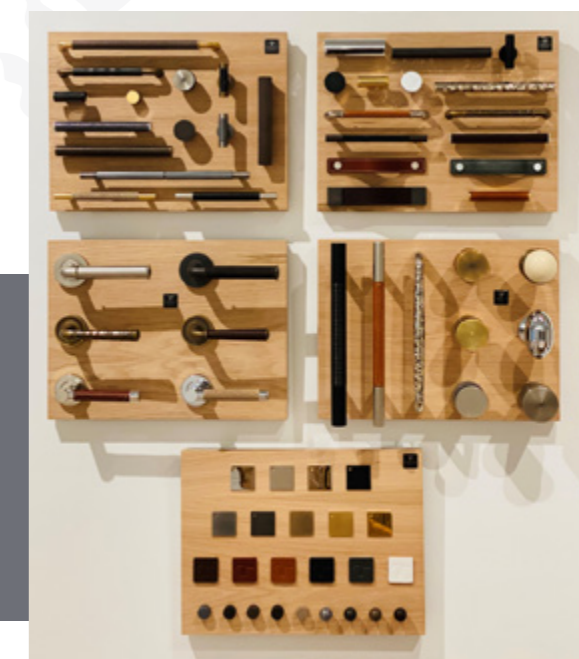
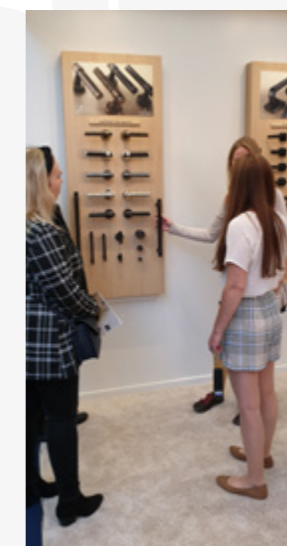
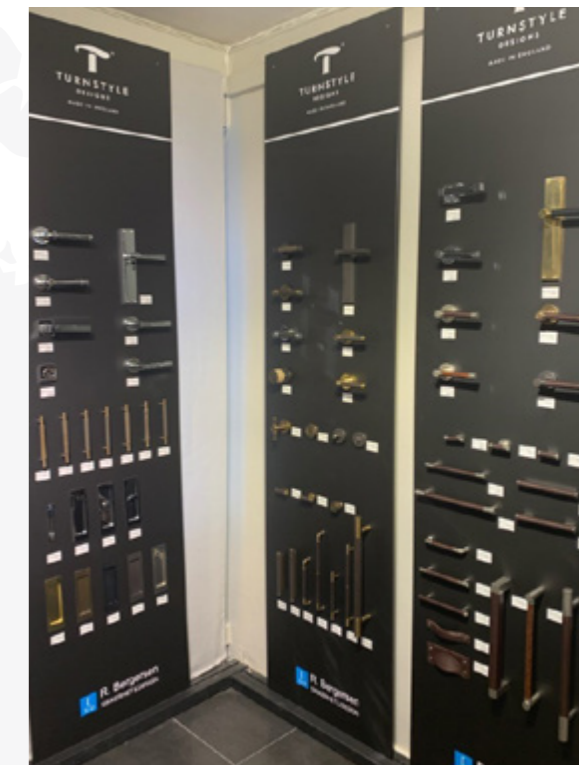


Shown here R1989 in Chestnut Leather with Bright Chrome

OUR PARTNERS

Turnstyle Designs are proud winners of The Queens Award for International Trade, the most prestigious business award in the UK, with over 75% of our products being exported to over 30 countries we could only have done this with the support and hard work of our international partners and specialists.

We are privileged to work with a global network of the best door hardware specialist dealers and agents throughout the world. All of our dealers carry and display a comprehensive range of samples. Our partners are carefully vetted for suitability before receiving comprehensive Turnstyle product training to ensure they can deliver the service we expect and you deserve.



EXHIBITIONS

We exhibit in various countries around the world to test and introduce our new designs, meet our clients and demonstrate our quality. There is no better way to view such an extensive range of product than to see it in the flesh.



FOCUS/22



westedge
DESIGN FAIR

100%design

DECOREX



Image Credit Information

Tektura Wallcoverings
www.tektura.com

Pg. 148 Shown P6702 in Sand with Fine Antique Brass
Photo courtesy of Mauzart Interiors

Pg. 148 Shown HS4100 in Polished Nickel
Photo courtesy of Hummingbird Design

Pg. 148 Shown SF1197 in Satin Brass Waxed
Photo courtesy of Philipp Griesmer Photography

Pg. 148 Shown P1079 in Silver Bronze with Polished Nickel
Photo courtesy of Neatsmith and Charlie B Photography

Pg. 148 Shown SF1805 in Matt Black Chrome
Photo courtesy of Harvey Jones and Laura Marin

Pg. 149 Shown U1189 in Black Leather with Fine Antique Brass
Photo courtesy of Camilla Bellord

Pg. 149 Shown P3170 in Silver Bronze with Fine Antique Brass
Photo courtesy of Tom Howley

Pg. 149 Shown R2076 in Tobacco Leather with Vintage Patina
Photo courtesy of Atelier Normads and Ann Holzbauer

Pg. 149 Shown P3030 in Alupewt with Bright Chrome
Photo courtesy of Habitus Concept

Pg. 149 Shown R1197 in Chestnut Leather with Bright Chrome
Photo courtesy of Davenport Kitchens

Pg. 149 Shown P3555 in Black Bronze with Vintage Nickel
Photo courtesy of Kimberley Harrison Interiors and Kathryn MacDonald Photography

Head Office

Turnstyle Designs
Baron Way
Roundswell Business Park
Barnstaple, EX31 3TB
England
+44(0) 1271 325 325 | sales@turnstyledesigns.com

US Office

41R State Street
Suite 102, Bristol
Rhode Island, 02809
United States of America
+1 877 288 4642 | +1 401 297 0424 | us-support@turnstyledesigns.com



+44(0) 1271 325 325 | +1 877 288 4642
sales@turnstyledesigns.com

TURNSTYLEDESIGNS.COM