

LON
DON
ART

**THE
DAYDREAMER vol.2**

GIOPAGANI

THE DAYDREAMER vol.2

Lyrics by **GIOPAGANI**

A collection is like a journey, and a journey always forms a memory that arouses emotions, generating the possibility of interpreting different creative horizons.

The Daydreamer expands its offer with the second volume of the collection, the result of a narrative that is already present in the Giopagani world, but revisited and full of new stimuli, inspired by the decorative elements that remain indelible in the imagination of an atmosphere. A single thought that wants to take on different styles and that expresses the desire to discover graphical aspects that may even be opposed to one another, but that exist within a well-defined creative and emotional philosophy. An all-encompassing path where design, fashion, music, photography, and architecture come together in a natural and sophisticated mix.

The setting is the Vertical Forest of Milan, the building that symbolizes a new architecture of biodiversity, which adds appeal to the collection thanks to the variations in colour and the shapes of the plant structure, which generate a large, iridescent, and highly recognizable landmark.

The new collection moves from a floral theme to abstractionism; it tries to experiment with different artistic paths than those previously treaded, exploring intense universes with an ethnic flavour.

A path that emphasizes the eclecticism and universal nature of taste; an itinerary that crosses Europe, Asia, and Africa, leaving indelible traces in the graphics that can be seen within the collection. The search for extreme depth in the composition is able to develop over large surfaces by skilfully mixing blush, burnt, rusty tones, macro geometry, lace, tarot cards, and botanical elements. The result is an almost primordial elegance, reinterpreted through the colours of the earth with tribal accents, in which each subject is embellished and sophisticated. The graphics become a substantial element of the architectural project; a story to dress the environments and make them evocative.

A nostalgic rock soul accompanies The Daydreamer, with rough accents and unexpected refined details. Thus each wallpaper transforms into a musical piece. A collection of tracks that guides the viewer like a soundtrack, to give a sound to aesthetics and inspiration, almost like composing an LP.

Wallpapers become music to listen to and not just to see.

Una collezione nasce come un viaggio e un viaggio porta sempre una memoria che suscita emozioni, generando la possibilità di interpretare orizzonti creativi diversi.

The Daydreamer amplia la sua proposta con il secondo volume della collezione, frutto di una narrativa già comune al mondo Giopagani, ma rielaborata e densa di nuovi stimoli, ispirata agli elementi decorativi che restano comunque indelebili in quello che è l'immaginario di un'atmosfera. Un pensiero unico che vuole cimentarsi in stili differenti ed esprime la volontà di scovare aspetti grafici anche contrapposti tra di loro, ma che nascono all'interno di una filosofia creativa ed emotiva ben definita. Un percorso a 360° in cui si fondono il design, la moda, la musica, la fotografia e architettura in una commistione naturale e sofisticata, senza forzature.

Lo scenario è il Bosco verticale di Milano l'edificio simbolo di una nuova architettura della biodiversità, che aggiunge appeal alla collezione grazie alle variazioni nel colore e alle forme della struttura vegetale che generano un grande landmark cangiante, fortemente riconoscibile.

La nuova collezione si muove dall'ambito fioreale all'astrattismo, cerca di sperimentare percorsi artistici diversi rispetto a quelli affrontati precedentemente, esplorando universi intensi dal sapore etnico.

Un percorso che enfatizza l'ecletticità e trasversalità del gusto, un itinerario che attraversa l'Europa l'Asia e l'Africa lasciando tracce indelebili nelle grafiche che si leggono all'interno della collection. La ricerca di un'estrema profondità nella composizione è in grado di svilupparsi su ampie superfici miscelando sapientemente toni cipria, bruciati, ruggini, macro geometrie, pizzi, tarocchi ed elementi botanici. L'esito è di un'eleganza quasi primordiale, reinterpretata attraverso i colori della terra con accenti tribali, in cui ogni soggetto risulta impreziosito e sofisticato. La grafica diventa un elemento sostanziale del progetto architettonico, un racconto per vestire gli ambienti regalando suggestione.

Un'anima rock nostalgica accompagna The Daydreamer, con accenti crudi e raffinatezze inaspettate. Così ogni carta si trasforma in un brano musicale. Una raccolta di tracce che guida lo spettatore come una "soundtrack", per dare un suono all'estetica e all'ispirazione, quasi a comporre un LP.

I wallpaper diventano musica da ascoltare e non soltanto da vedere.

GIOPAGANI



Narrator of tactile stories. Nomadic spirit with an international attitude.

A multi-faceted architect, Gio Pagani established his design studio in Parma in 1995, with the aim of offering architectural and lifestyle solutions rooted in an unconventional elegance, where innovation and eclecticism find a balance with functionality and aesthetic: "Design is a value that cannot be separated from utility, it must necessarily be functional to a purpose".

Travelling and discovering are keys in the maturation of his creative spirit, guided by a strong attitude toward exchange and interaction, where the crossover of different impulses generates a personal iconic style.

"I have no roots, I love to travel, and it's extraordinary to think that something new can be built in every place", explains Gio Pagani. "Dynamism is a stimulus. Not just the creative dynamism but also the one linked to my journeys. Milan, London, Paris and New York are places where I need to spend time to confront myself with reality, to find new inspirations and future perspectives."

Inspirations from the world converge into his architectural projects worldwide. The act of designing, whether it is buildings, hotels, private villas, residential or retail interior spaces, leads Gio Pagani to express an original creativity that reflects his wide background of experiences.

Gio Pagani is also dedicated to the creation of unique objects, giving life to paths that involve all the senses with a strong emotional impact, where imagination and fantasy are combined for a tactile experience.

The GIOPAGANI collection is the result of all the impulses that have guided his professional career, where the love for design and for the study of matter are combined, shaping objects in which the foresight of design and the contemporary inspiration of fashion are combined in a personal and refined taste, always devoted to giving a sense of well-being and enrichment to everyday life.

"It's important to surround ourselves with objects that can guide us in everyday lives. Because some of them will help make sense of more important things", Gio Pagani firmly believes.

Autore di storie plasmate nella materia. Spirito nomade dall'attitudine internazionale.

Poliedrico architetto, Gio Pagani fonda il suo studio di progettazione a Parma nel 1995 con l'obiettivo di offrire soluzioni architettoniche e di design votate a un'eleganza fuori dagli schemi, dove audacia ed eclettismo si sposano ad una costante ricerca di funzionalità: "Il design è un valore che non può prescindere dall'utilità, deve essere necessariamente funzionale a uno scopo".

Il viaggio e la scoperta si rivelano presto chiavi fondamentali per la maturazione del suo spirito creativo, guidato da una forte propensione allo scambio, all'interazione, in cui la convergenza di impulsi diversi genera una forte carica stilistica.

"Non ho radici, amo viaggiare, ed è straordinario pensare che in ogni luogo si possa costruire qualcosa di nuovo," spiega Gio Pagani. "Il dinamismo è uno stimolo. Non solo il dinamismo creativo ma anche quello legato ai miei viaggi. Milano, Londra, Parigi e New York sono luoghi in cui ho bisogno di passare del tempo per confrontarmi con la realtà, le nuove ispirazioni, le prospettive future".

Ispirazioni dal mondo, racchiuse in progetti d'architettura, che hanno trovato la loro espressione e collocazione in tutto il mondo. L'atto di progettare, che si tratti di edifici, siano essi alberghi o abitazioni, oppure d'interni abitativi o spazi retail, porta Gio Pagani ad esprimere una creatività originale, riflesso del suo ampio background esperienziale.

Gio Pagani si dedica anche alla creazione di oggetti unici, dando vita a percorsi che coinvolgono tutti i sensi in un vortice emozionale, in cui l'immaginazione e la fantasia si combinano all'esperienza tattile e materica.

La collezione GIOPAGANI è il risultato di tutti gli impulsi che hanno guidato il suo percorso professionale, dove l'amore per il progetto e per lo studio della materia si sposano, plasmando oggetti in cui la lungimiranza del design e l'afflato contemporaneo della moda si combinano in un gusto personale e raffinato, sempre votato a donare un senso di benessere e arricchimento alla quotidianità.

"Bisogna circondarsi di oggetti che ci possano orientare nella vita di tutti i giorni. Perché alcuni di loro contribuiranno a dare un senso a cose più importanti," crede fermamente Gio Pagani.



SURREALISTIC PILLOW

An explosion of optical motifs that, playing between filled and empty spaces like on an artist's canvas, evoke a euphoric and luminous imagery, thanks to modular micro and macro patterns that expand the surface of the wall. The protagonists are the clean and elementary geometric shapes, in which the line, the point, the circle, the triangle, merge into material surfaces giving life to digital transpositions of analogue visions. The result is imagery that transforms the space into a surreal container, a daydream, in which the technological vision almost loses consistency, leaving room for natural and oneiric landscapes. The colour palette, ranging from warm earth tones such as beige, brown, warm red, and orange, is enlivened by sophisticated touches of green and coral that complete the range. The wallpapers of Surrealistic Pillow support the evolution of contemporary living by introducing several decor possibilities and inaugurating brand-new expressive solutions.

Un'esplosione di motivi optical che, giocando tra pieni e vuoti come in una tela d'artista, raccontano un immaginario euforico e luminoso, grazie a micro e macro pattern modulari che dilatano la superficie della parete. Protagoniste sono le geometrie pulite ed elementari, in cui la linea, il punto, il cerchio, il triangolo si fondono in superfici materiche dando vita a trasposizioni digitali di visioni analogiche. Il risultato è un immaginario in grado di trasformare lo spazio in un contenitore surreale, un sogno ad occhi aperti, in cui la visione tecnologica perde quasi consistenza lasciando posto a paesaggi naturali e onirici. La palette di colori, che va dai toni caldi della terra come il beige, il marrone, il rosso caldo, l'arancio è ravvivata da tocchi sofisticati di verde e corallo che completano la gamma. I wallpaper di Surrealistic Pillow assecondano l'evoluzione dell'abitare contemporaneo introducendo diverse possibilità di decoro e inaugurando inedite soluzioni espressive.





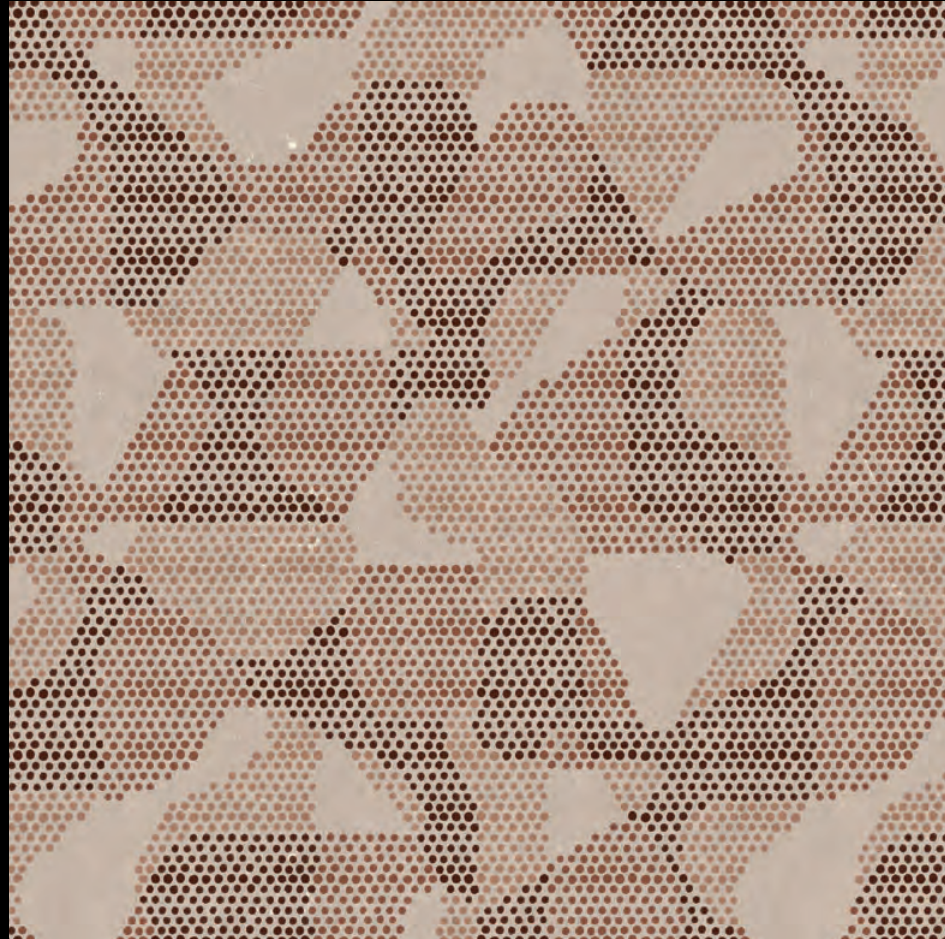


“Well ‘til the morning, tell me true
Will tell my way of acting, blow in somebody new
Now, in the morning, well ‘til the morning, tel me true
Well when you’re gone ain’t going to worry mine no more”

IN THE MORNING | TDV2GP101







"One pill makes you larger
And one pill makes you small
And the ones that mother gives you
Don't do anything at all
Go ask Alice
When she's ten feet tall"

WHITE RABBIT | TDV2GP102

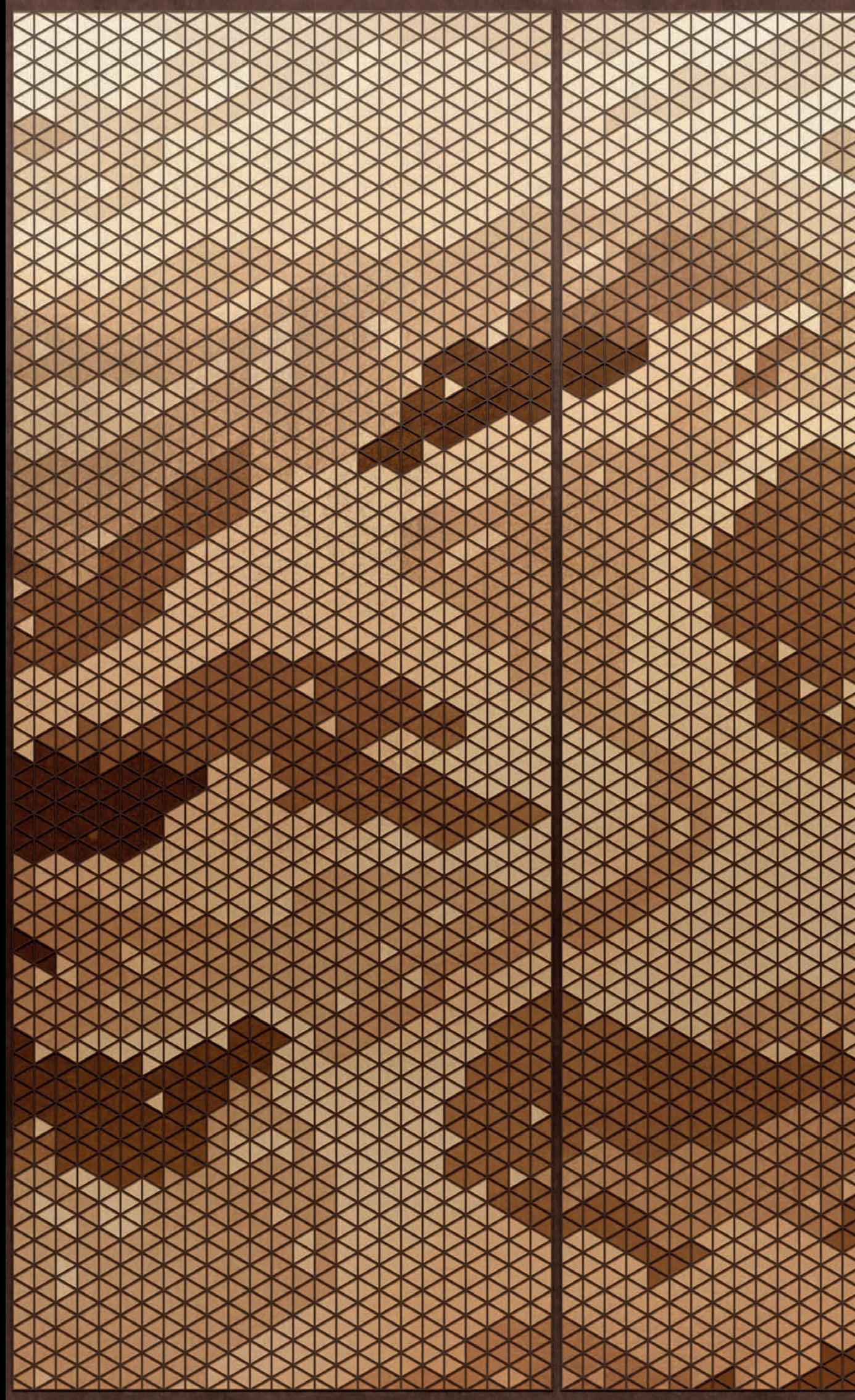






“How do you feel
Just look at her smile
Do you see what I mean
She is looking our way
Oh how I wish we could stay,
Just stay for a while
How do you feel”

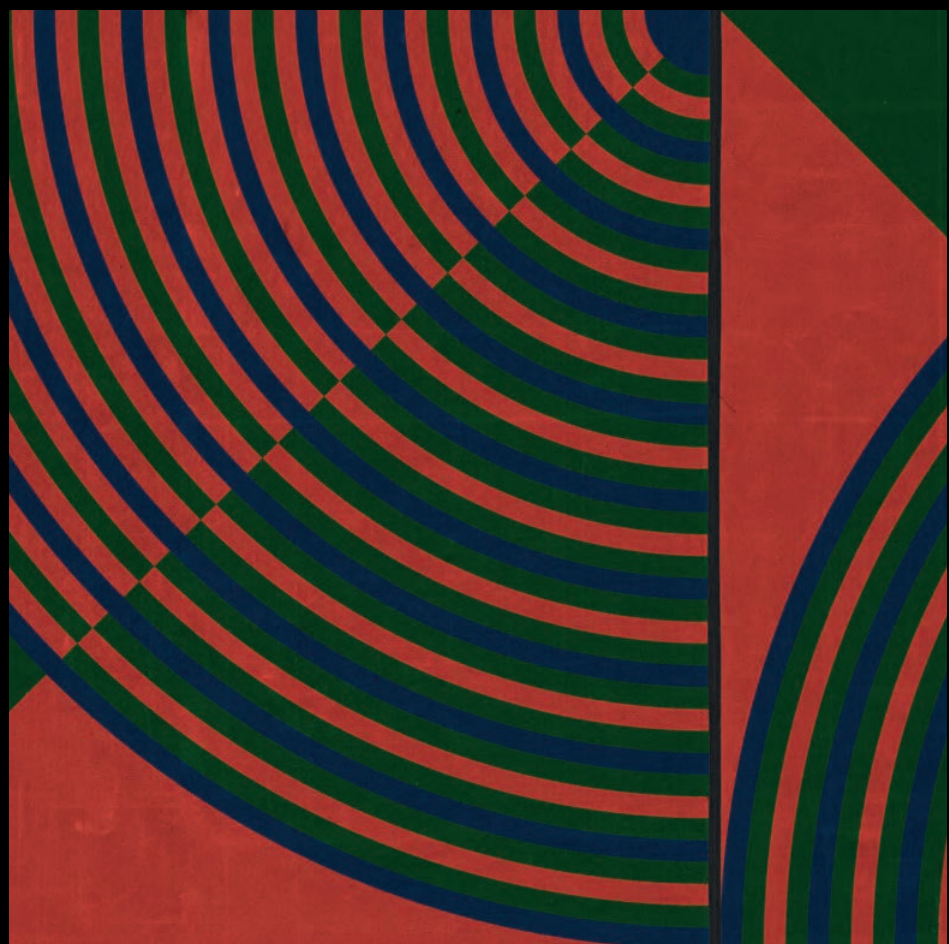
HOW DO YOU FEEL | TDV2GP103





Listen on
Spotify





"Ah, come back baby, baby please don't go
The way I love you, I want the world to know
Come back baby, let's talk it over, one more time
One more time"

COME BACK BABY | TDV2GP104







“Your eyes, I say your eyes may look like his
Yeah but in your head, baby
I'm afraid you don't know where it is
Don't you want somebody to love?
Don't you need somebody to love?
Wouldn't you love somebody to love?
You better find somebody to love”

SOMEBODY TO LOVE | TDV2GP105





FOR YOUR PLEASURE

The beginning of a shared journey between idea and matter, a liaison capable of intertwining design and thought within the same plot. A series of more personal and imperfect subjects make their way among the graphics, handmade drawings, rough and irregular textures, the representation of an interior graphical research that gives life to ethnic wallpapers with a primordial appeal. These expressive and functional images are characterized by a strong sense of chiaroscuro and the contrast between light and dark. A powerful expressive language, dedicated to the primitive forces of existence in a rich palette of earthy and monochromatic tones, interrupted by the lively tone of the warmest shades. Insisting on the strong bond that unites design to art as the one that underlies the eternal relationship between humankind and nature, with a 'handmade' look, we also witness an unexpected opulent interpretation of the tarot, in a harmonious coexistence of styles and inspirations that never ceases to amaze.

L'inizio di un percorso corale tra idea e materia, una liaison capace di intrecciare nella stessa trama disegno e pensiero. Tra le grafiche si fanno spazio una serie soggetti più personali e imperfetti, disegni handmade, texture ruvide e irregolari, rappresentazione di una ricerca grafica interiore che sfocia in wallpaper etnici dal richiamo primordiale. Queste grafiche dal carattere espressivo e funzionale, sono caratterizzate da un forte senso del chiaroscuro e del contrasto tra luce e ombra. Un potente linguaggio espressivo, dedicato alle forze primitive dell'esistenza in una ricca palette di toni terrosi e monocromatici, interrotta dal tono brioso delle nuance più calde. Ribadendo il forte legame che unisce il design all'arte come quello che sottende l'eterna relazione fra uomo e natura, con un look "fatto a mano", assistiamo anche a un'imprevista interpretazione opulenta dei tarocchi, in una convivenza armonica di stili e ispirazioni che non smette di stupire.







"You're rubbing shoulders
With the stars at night, shining so bright
Getting older
But you'll wake up soon and fight
In the morning
Things you worried about last night
Will seem lighter
I hope things will turn out right"

FOR YOUR PLEASURE | TDV2GP201





Listen on Spotify





“Dance on moonbeams
Slide on rainbows
In furs or blue jeans
You know what I mean
Do the Strand
Ooh”

DO THE STRAND | TDV2GP202







“Well, I’m here looking through an old picture frame
Just waiting for the perfect view
I hope something special will step in to my life
Another fine edition of you
A pin-up done in shades of blue”

EDITIONS OF YOU | TDV2GP203







“Tongue tied the thread of conversation
Weighing the words one tries to use
Nevertheless communication
This is the gift you must not lose
Hauling me always are the voices
Sometimes I wonder if they're real
Or is it my own imagination?”

STRICTLY CONFIDENTIAL | TDV2GP204





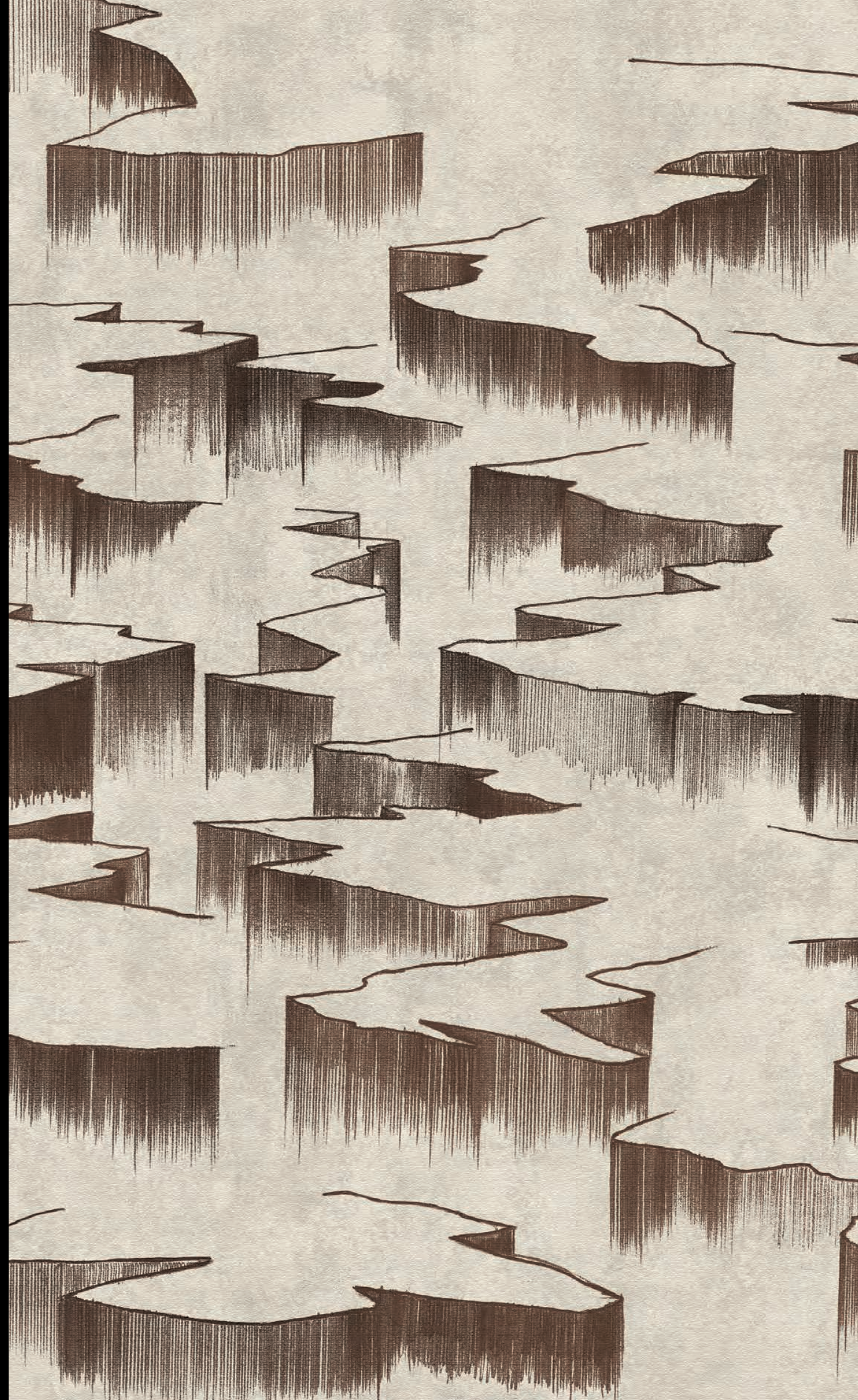
Listen on Spotify





“Satin teardrops on velvet lights
Morning sickness on Friday nights
Heaven knows what others I might bring
To you”

GREY LAGOONS | TDV2GP205





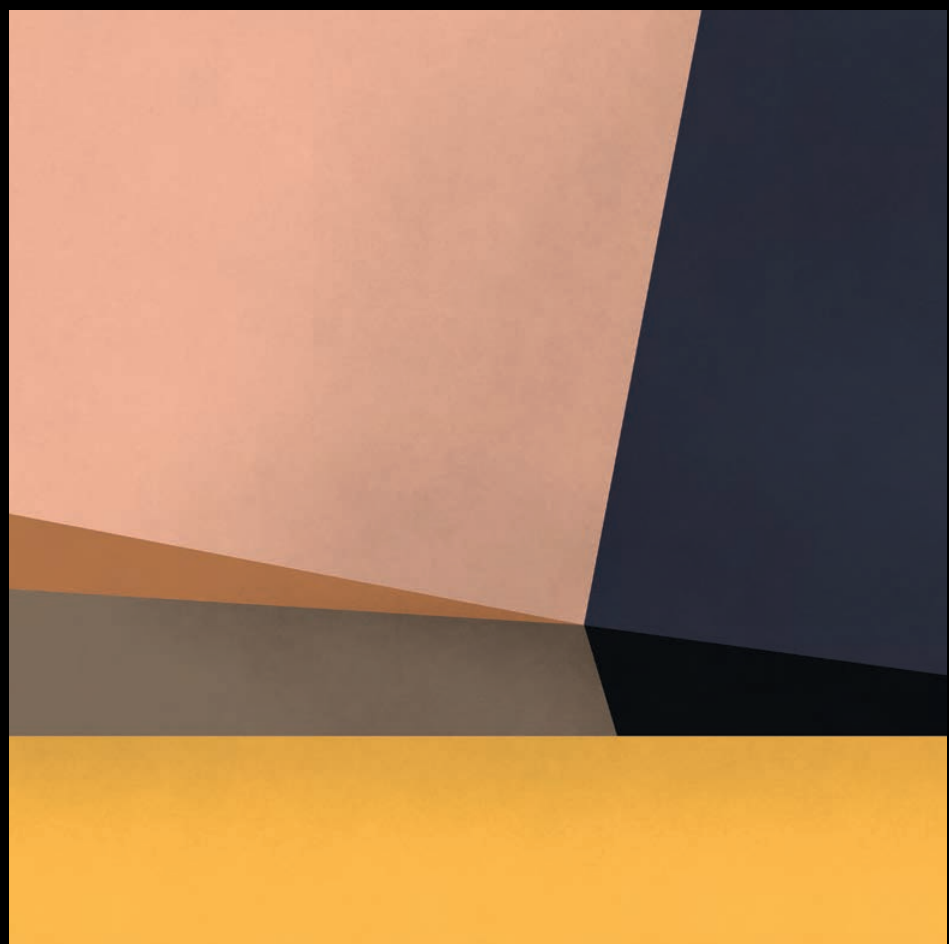
WHEELS OF FIRE

Macro-geometry is the protagonist, pure colour becomes total space, which envelops and leads to hypnotic sensations, to new visual shores, to fantastic journeys. Backgrounds of colour in which the boundaries and shades are the detail of a movement. The wallpapers in Wheels Of Fire develop on the evocative imagery that derives from the cultural movement to which Rothko belongs, Color field painting, characterized by the use of large hemp canvases with fields of flat, solid colour spread across them. The movement rejects any factor related to shape, stroke, and material, focusing exclusively on the effects derived from the combinations of the various fields of colour. In color field painting, like in these subjects, colour is the only strength and takes on an actual role, arousing emotions.

Le Macro-geometrie sono protagoniste, il colore puro diventa spazio totale, che avvolge e conduce a sensazioni ipnotiche, a nuovi lidi visivi, a percorsi fantastici. Campiture di colore in cui i limiti e le sfumature sono il dettaglio di un movimento. I wallpaper in Wheels Of Fire sono sviluppati sul suggestivo immaginario che deriva dal movimento culturale a cui appartiene Rothko, il Colorfield Painting o "Pittura color field" (per l'appunto, pittura a campi di colore) caratterizzato dall'impiego di tele di canapa di grandi dimensioni su cui vengono stesi ampi spazi invariati di colore. Il movimento rifiuta qualsiasi fattore relativo a forma, segno e materia, orientandosi esclusivamente sugli effetti derivati dagli accostamenti dei vari campi di colore. Nella pittura di sfondi, come in questi soggetti, il colore è l'unica forza e assume un vero e proprio ruolo, suscitando emozioni.



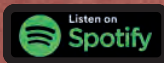


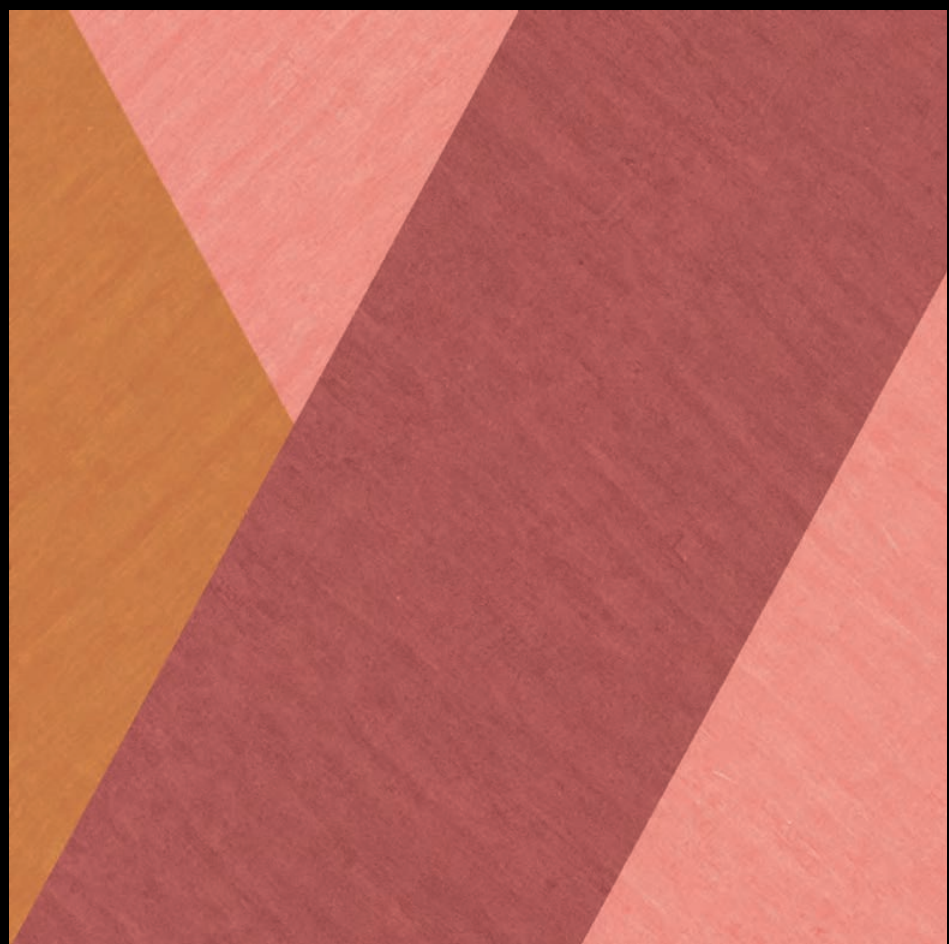


"It is a long winter
Away is the songbird
She waits for her traveller
So far from home
She sits by the fireside
The room is so warm
There's ice on the window
She's lonely alone"

PASSING THE TIME | TDV2GP301



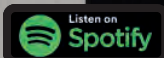




"I went down to the crossroads, fell down on my knees
Down to the crossroads fell down on my knees
Asked the Lord above for mercy,
Take me, if you please"

CROSSROADS | TDV2GP302







“One summer day she went away
Gone and left me, she’s gone to stay
She’s gone, but I don’t worry
I’m sitting on top of the world”

SITTING ON THE TOP OF THE WORLD | TDV2GP303







“Bad luck and trouble's my only friend
I've been down ever since I was ten
Born under a bad sign
I've been down since I began to crawl
If it wasn't for bad luck
I wouldn't have no luck at all”

BORN UNDER A BAD SIGN | TDV2GP304







"In a white room with black curtains near the station
Black roof country, no gold pavements, tired starlings
Silver horses ran down moonbeams in your dark eyes
Dawnlight smiles on you leaving, my contentment
I'll wait in this place where the sun never shines
Wait in this place where the shadows run from themselves"

WHITE ROOM | TDV2GP305





MR. FANTASY

The designs of the Mr. Fantasy wallpapers travel in time, starting from classic tactile scenography, passing through the psychedelia of the 60s, arriving at the chromatic stylization of the 70s. In this chapter, the exploration of representation of floral decoration reaches its apex. The secret is to focus on intense shades to give personality and light to the ensemble. A fantastic and instinctive journey, populated with new shapes; irradiated with sensuality, capable of absorbing everything, to the point of blurring boundaries. Stimulating geometric shapes that vibrate on the chromatic contrast and more poetic depictions of floral bouquets and bucolic shades, waves and lace. Nothing is left to chance, from the interpretation of the shapes to the combinations of colour, to compose a graphic kaleidoscope capable of giving personality and identity to any space, in a rich set of warps and wefts that weave a new anthology through strokes of imagination.

Le grafiche dei wallpaper Mr. Fantasy, viaggiano nel tempo partendo da scenografie classiche tattili, passando per la psichedelia anni 60, arrivando alla stilizzazione cromatica degli anni 70. In questo capitolo l'esplorazione della rappresentazione del floreale decorativo raggiunge l'apice. Il segreto è puntare su nuance intense per conferire personalità e luce all'ensemble. Un viaggio fantastico e istintivo, popolato di nuove forme; irradiato di sensualità, capace di assorbire tutto, fino a sfumare i confini. Geometrie incalzanti che vibrano sul contrasto cromatico e raffigurazioni più poetiche di bouquet floreali e sfumature bucoliche, onde e pizzi. Nulla è scontato, dall'interpretazione delle forme, all'accostamento di colori, per comporre un caleidoscopio grafico in grado di conferire personalità e identità a qualsiasi spazio, in un ricco insieme di trame e orditi, che tessono una nuova antologia a colpi di fantasia.





Listen on
Spotify





"You ride on the swing in and out of the bars
Capturing moments of life in a jar
Playing with children, acting as stars
Guiding your vision to heaven and heaven is in your mind
Take extra care not to lose what you feel
The apple you're eating is simple and real
Water the flowers that grow at your heel
Guiding your vision to heaven and heaven is in your mind"

HEAVEN IS IN YOUR MIND | TDV2GP401

DESIGNED IN COLLABORATION WITH ALIDA CAPELLA







“Day in the city, oh what a pity
I could be in Berkshire where the poppies grow so pretty
I could be in Berkshire where the poppies grow so pretty
I wish that I was there
I wouldn't really have but a care”

BERKSHIRE POPPIES | TDV2GP402





Listen on Spotify





“On the door of one was truth
On the other door was lies
Which one should I enter thru?
I really must decide
The door of lies had lots of flowers
Growing round outside
But looking close
I noticed it was crumbling inside
The door of truth was very plain
But stood up very strong
And when I entered thru it's door
I knew I wasn't wrong”

HOUSE FOR EVERYONE | TDV2GP403





Listen on Spotify





“Dear Mister Fantasy, play us a tune
Something to make us all happy
Do anything, take us out of this gloom
Sing a song, play guitar, make it snappy
You are the one who can make us all laugh
But doing that, you break out in tears
Please don't be sad if it was a straight mind you had
We wouldn't have known you all these years”

DEAR MR. FANTASY | TDV2GP404





Listen on Spotify





“Smiling Phases, going places
Even when they bust you
Keep on smiling through and through
And you’ll be amazed at the gaze on their faces
As they sentence you”

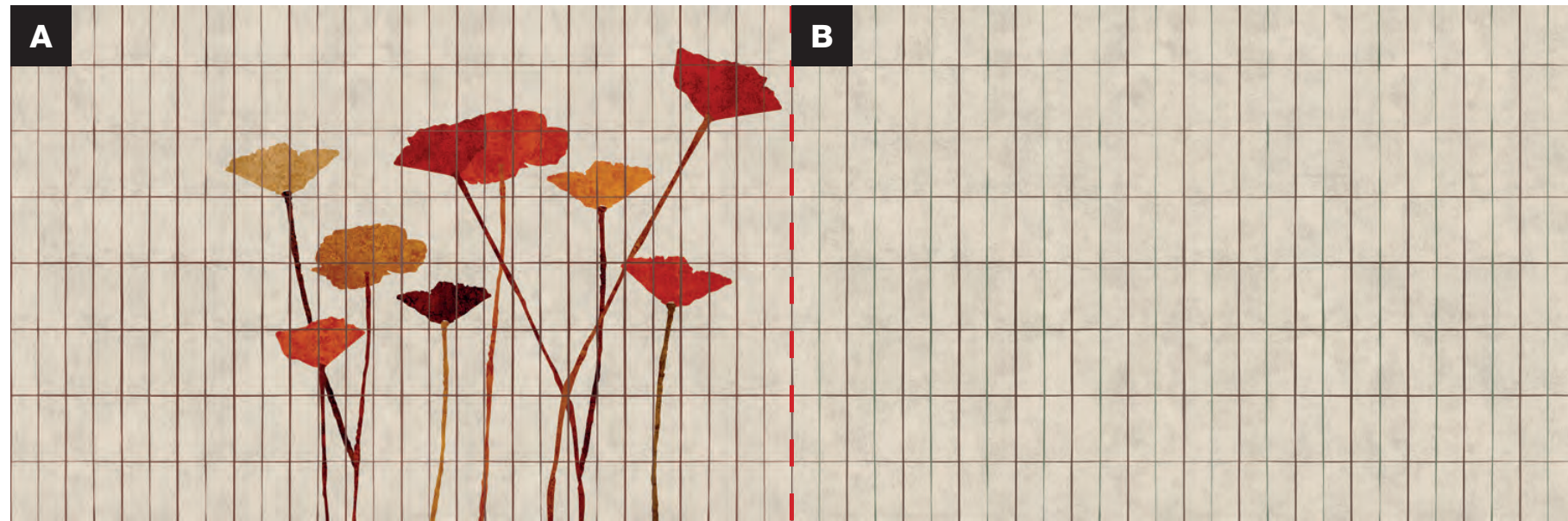
SMILING PHASES | TDV2GP405



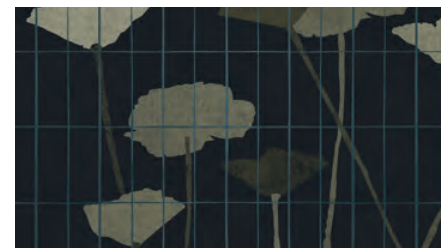
DISCOGRAPHY



IN THE MORNING



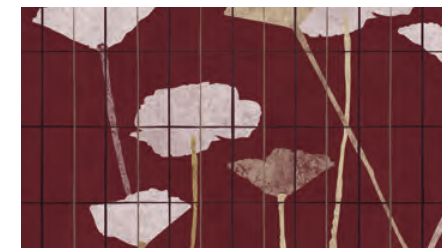
TDV2GP101_1



TDV2GP101_2

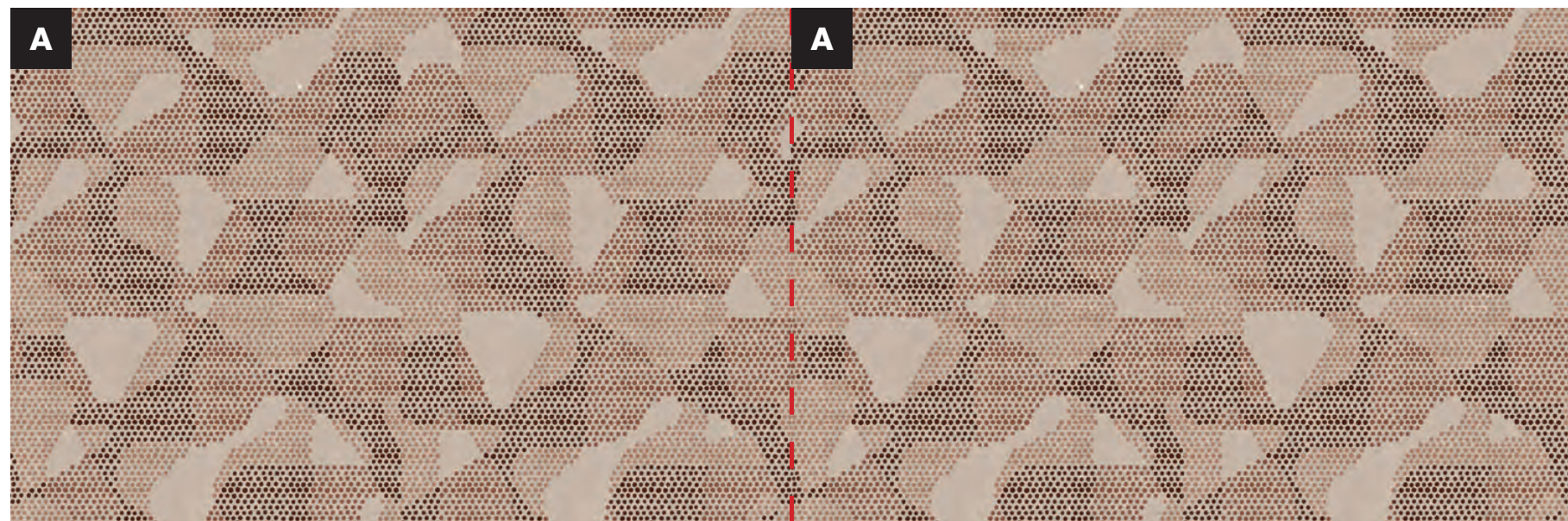


TDV2GP101_3

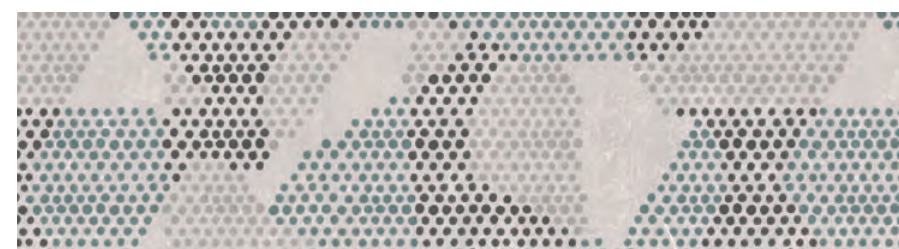


TDV2GP101_4

WHITE RABBIT

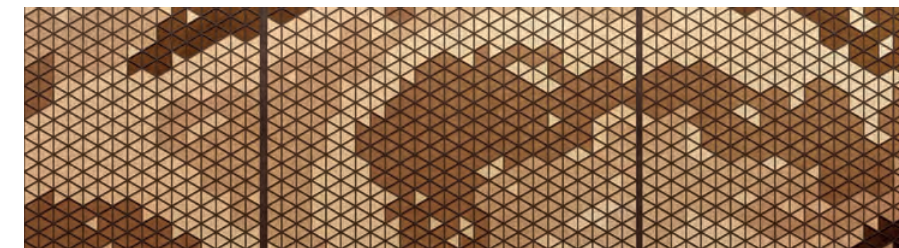
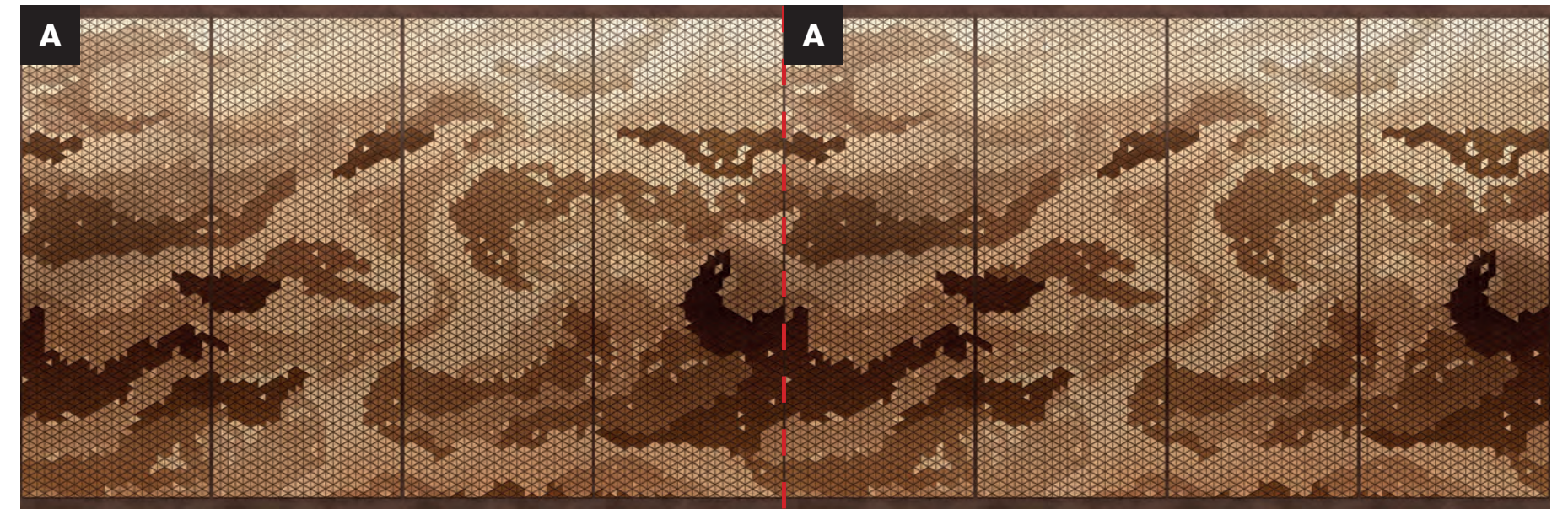


TDV2GP102_1

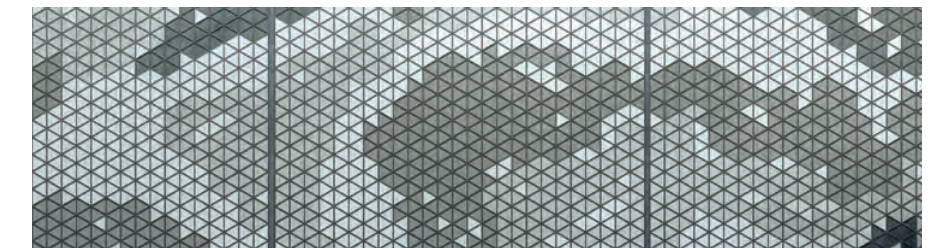


TDV2GP102_2

HOW DO YOU FEEL

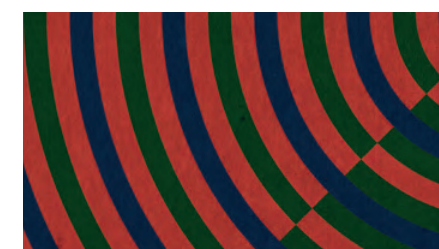
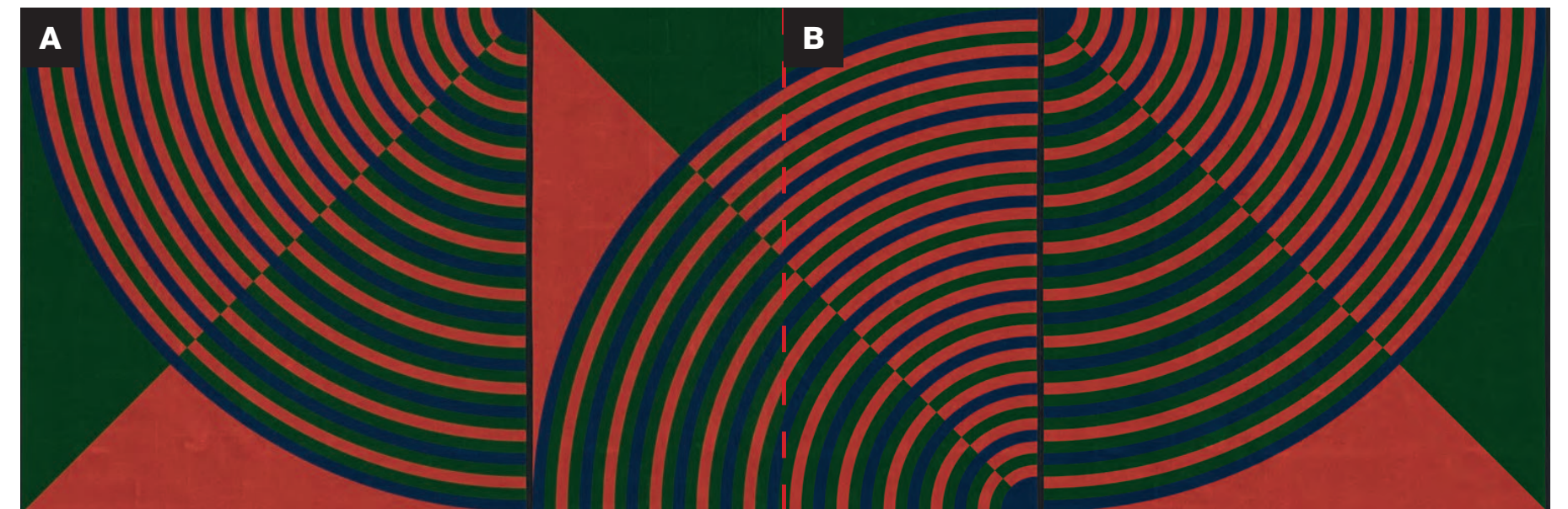


TDV2GP103_1



TDV2GP103_2

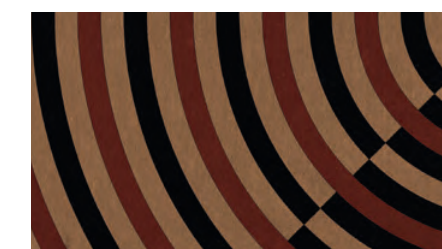
COME BACK BABY



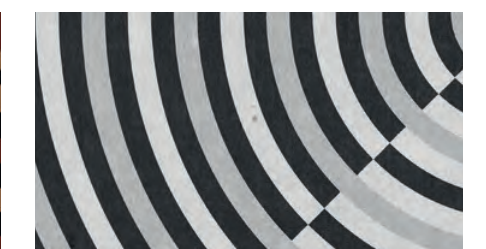
TDV2GP104_1



TDV2GP104_2

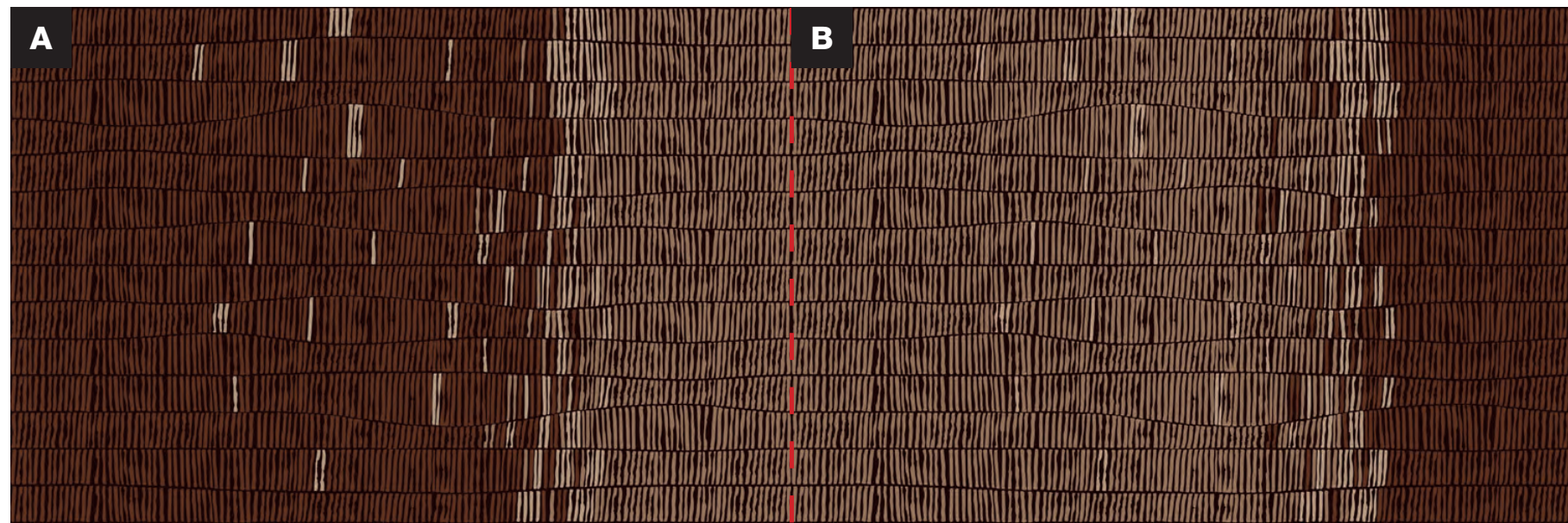


TDV2GP104_3

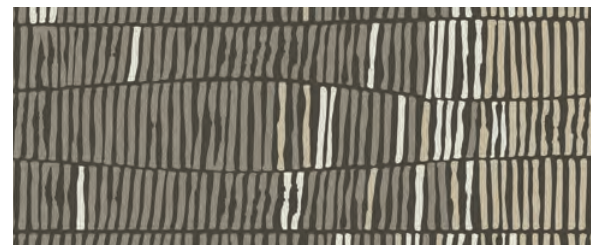


TDV2GP104_4

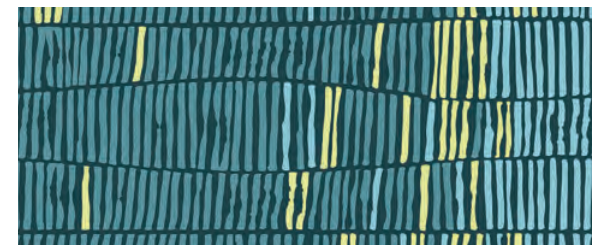
SOMEBODY TO LOVE



TDV2GP105_1

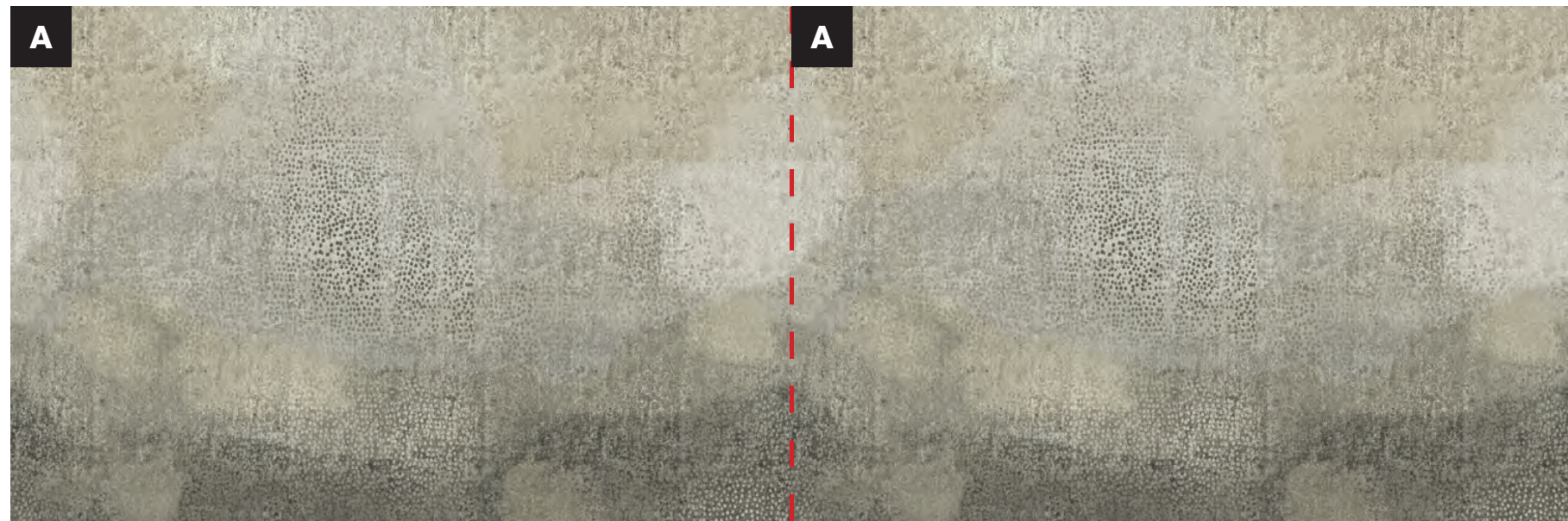


TDV2GP105_2



TDV2GP105_3

FOR YOUR PLEASURE

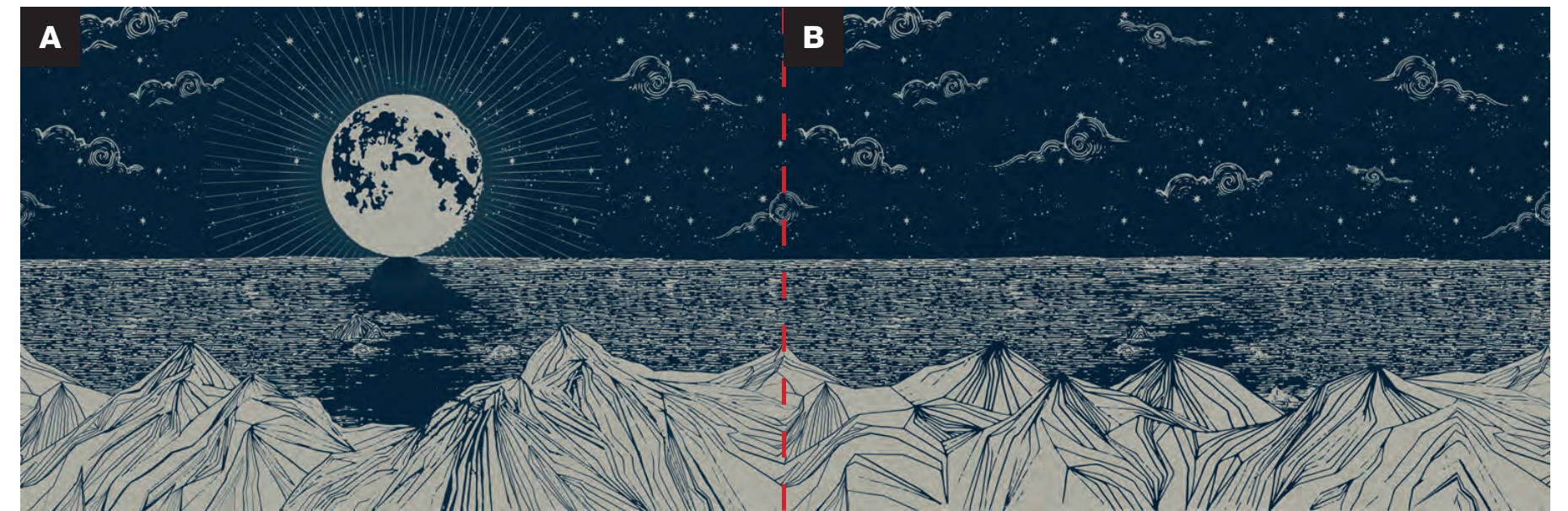


TDV2GP201_1



TDV2GP201_2

DO THE STRAND



TDV2GP202_1



TDV2GP202_2



TDV2GP202_3



TDV2GP202_4

SMILING PHASES

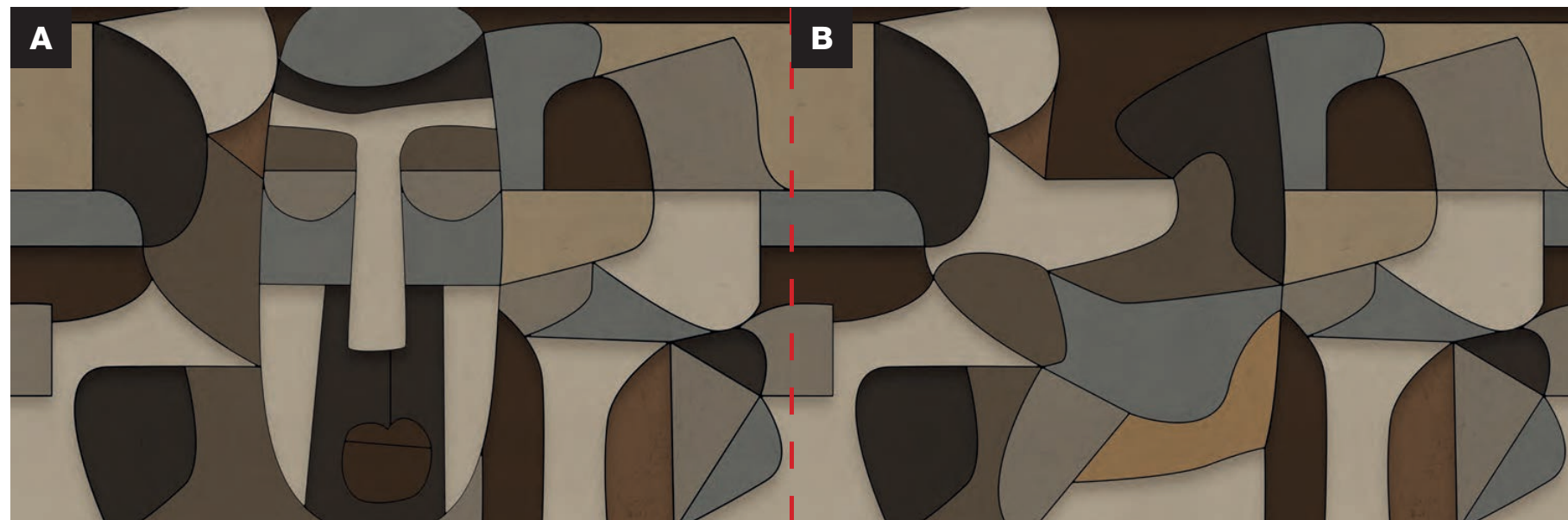


TDV2GP203_1



TDV2GP203_2

STRICTLY CONFIDENTIAL

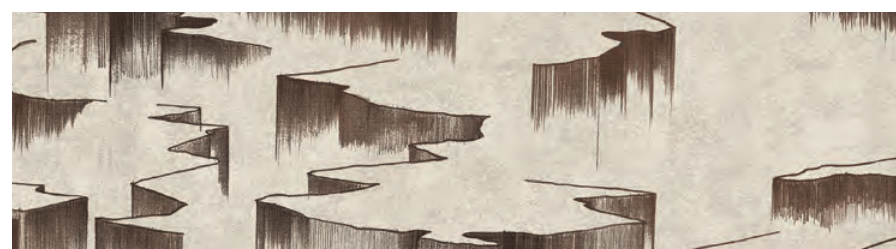
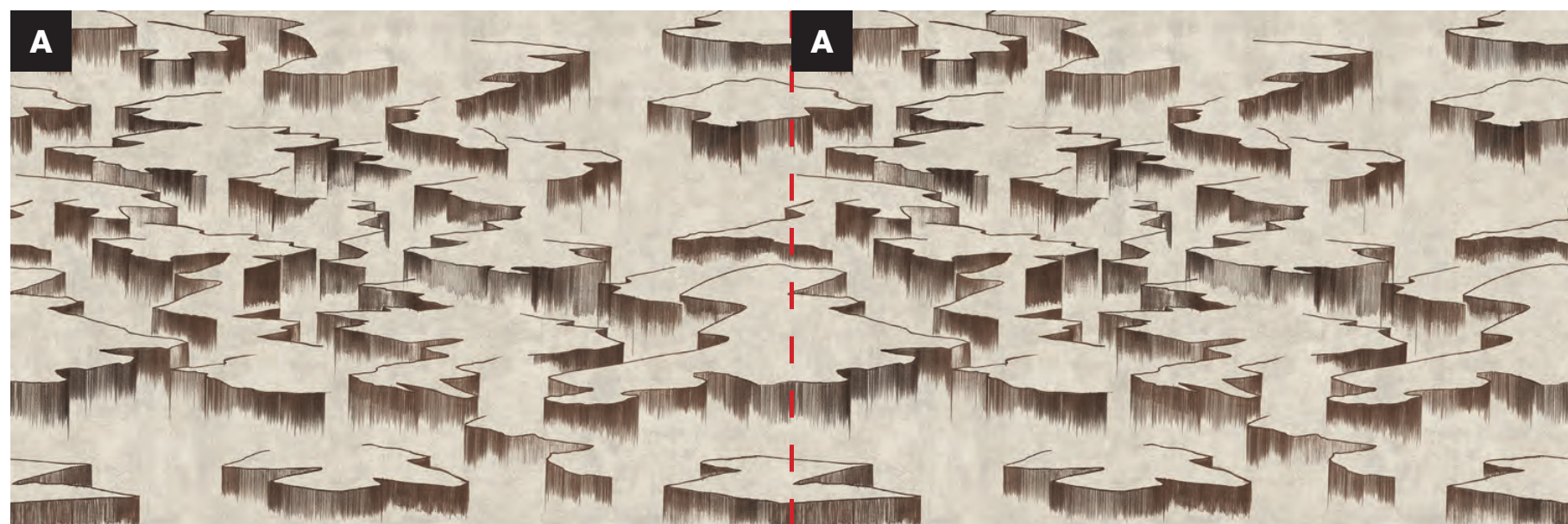


TDV2GP204_1



TDV2GP204_2

GREY LAGOONS

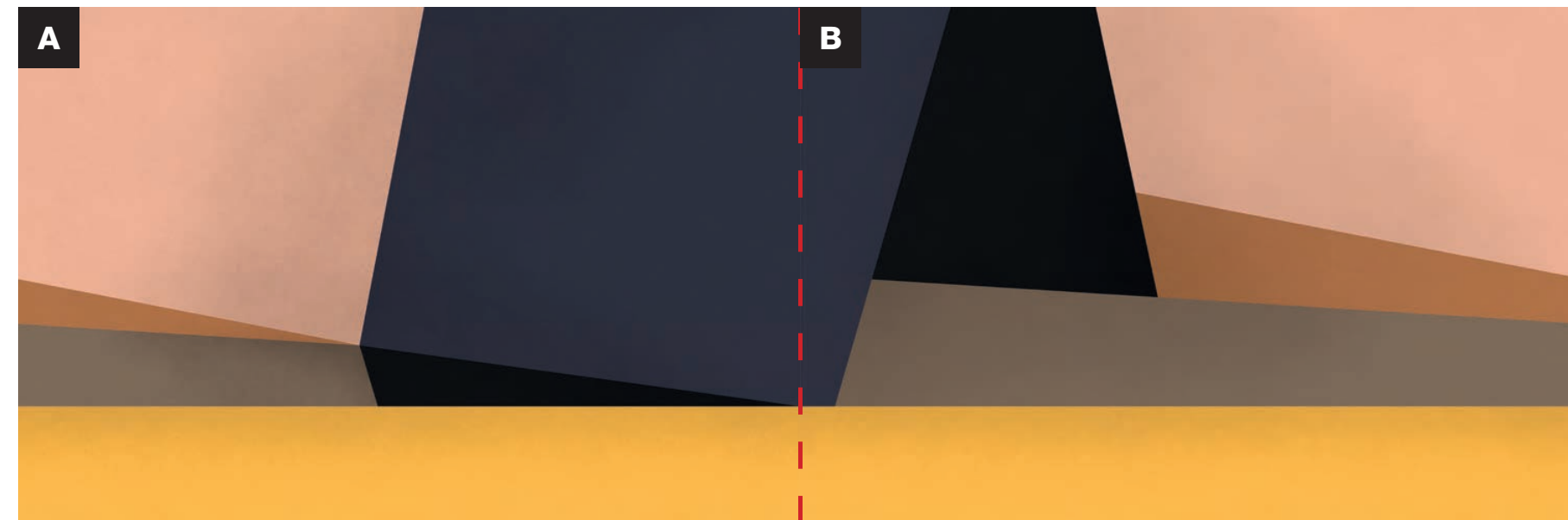


TDV2GP205_1



TDV2GP205_2

PASSING THE TIME

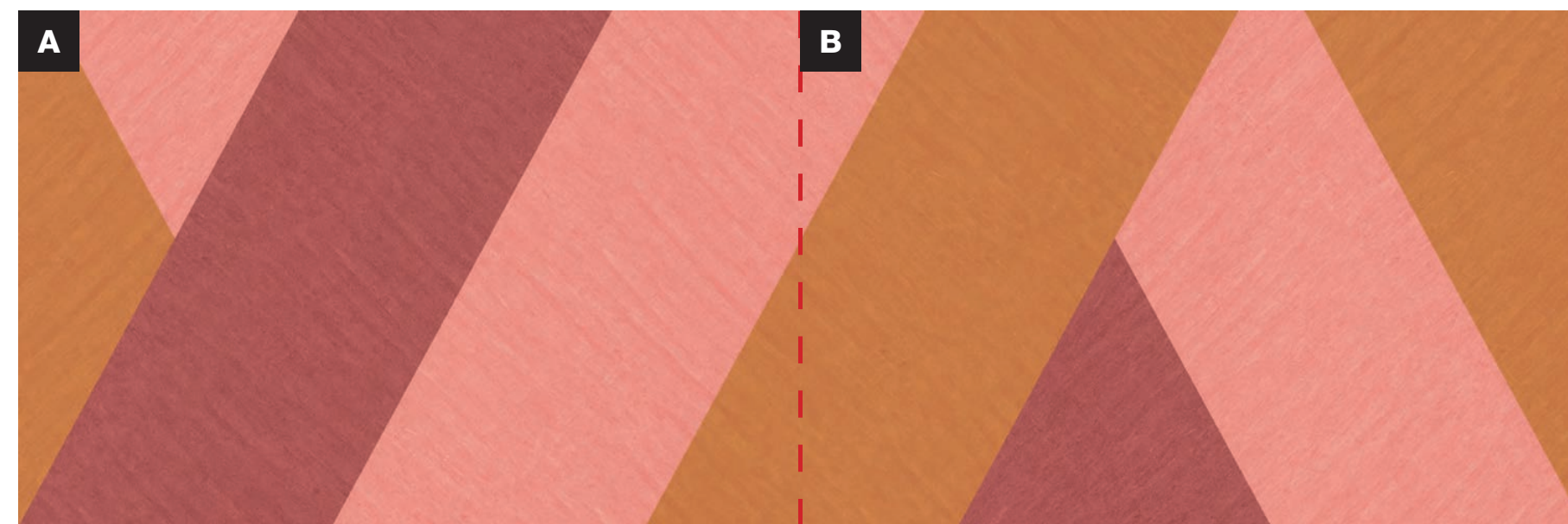


TDV2GP301_1



TDV2GP301_2

CROSSROADS



TDV2GP302_1

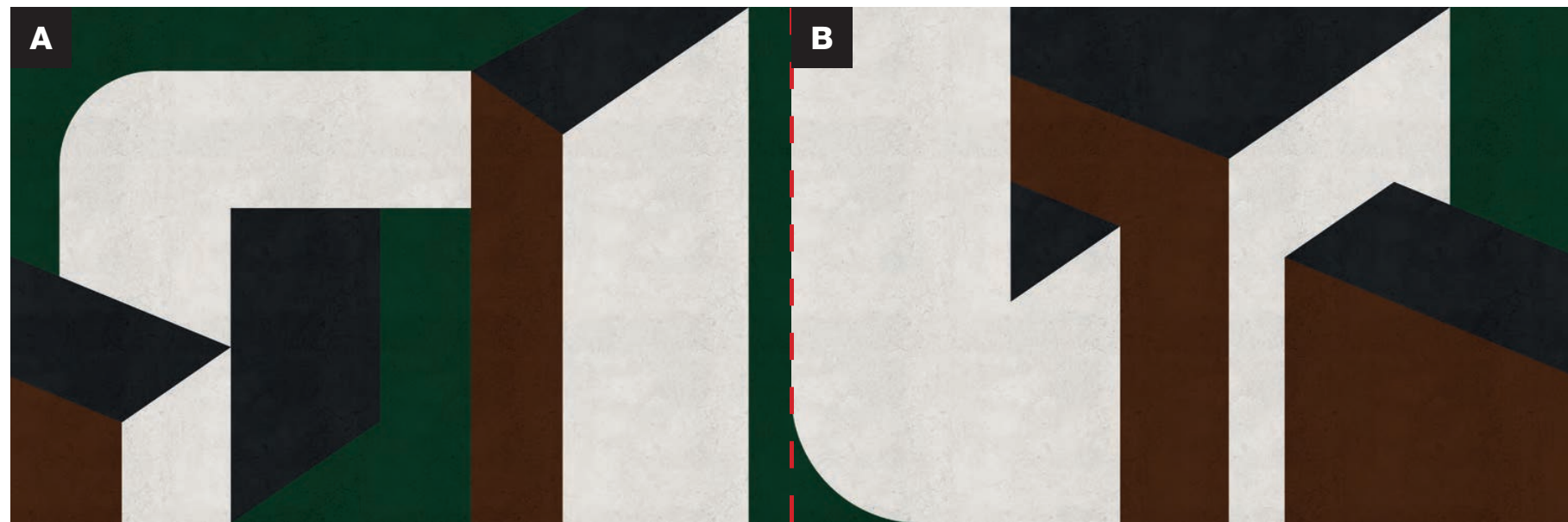


TDV2GP302_2



TDV2GP302_3

SITTING ON THE TOP OF THE WORLD

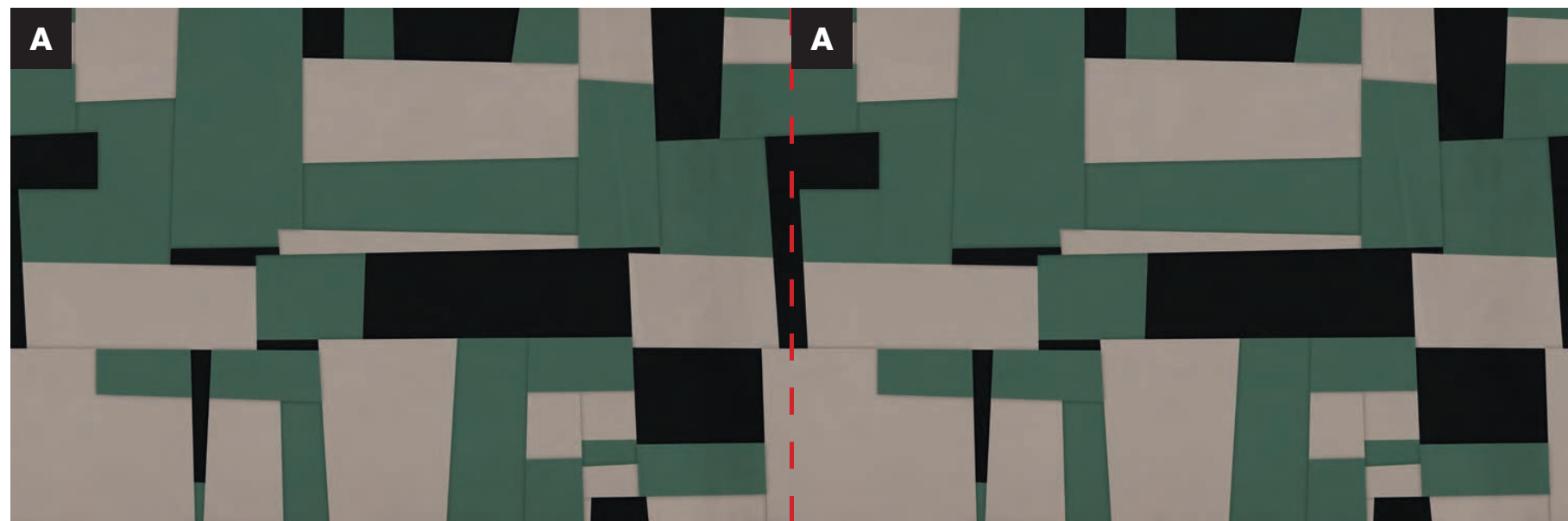


TDV2GP303_1



TDV2GP303_2

BORN UNDER A BAD SIGN

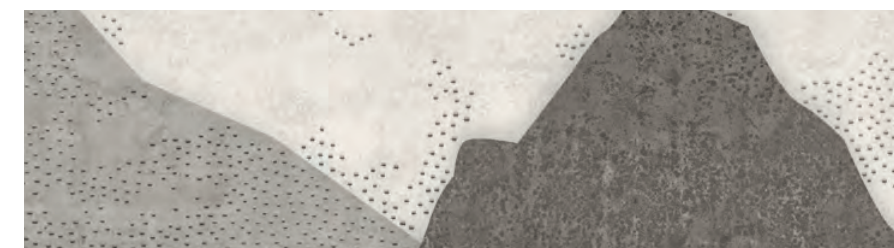
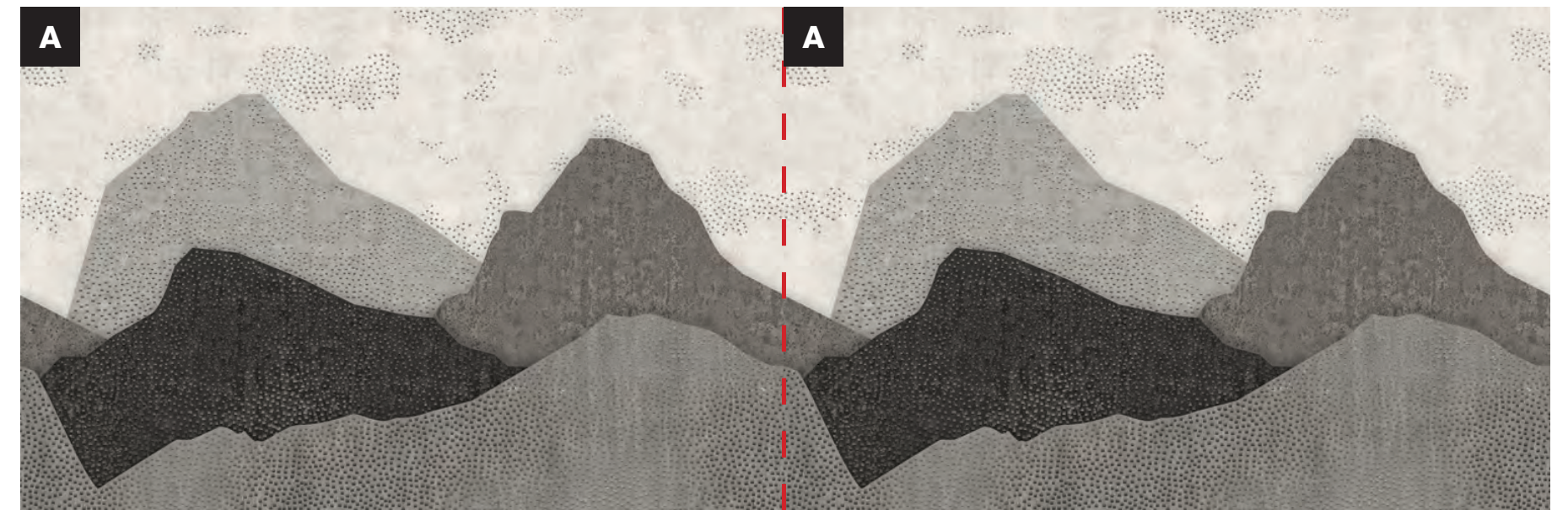


TDV2GP304_1



TDV2GP304_2

WHITE ROOM



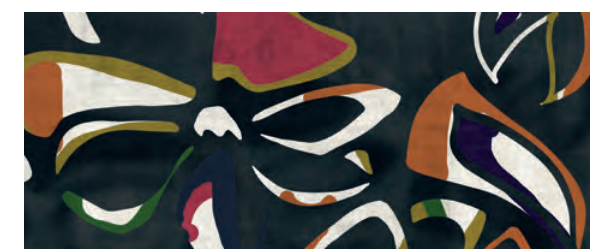
TDV2GP305_1



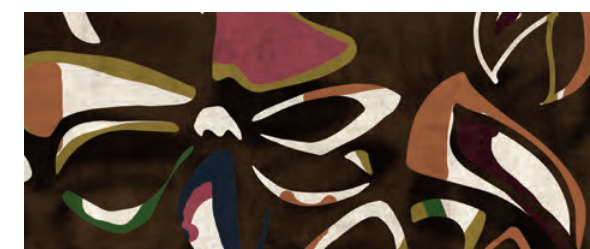
TDV2GP305_2

HEAVEN IS IN YOUR MIND

DESIGNED IN COLLABORATION WITH ALIDA CAPELLA



TDV2GP401_1



TDV2GP401_2



TDV2GP401_3

BERKSHIRE POPPIES



TDV2GP402_1

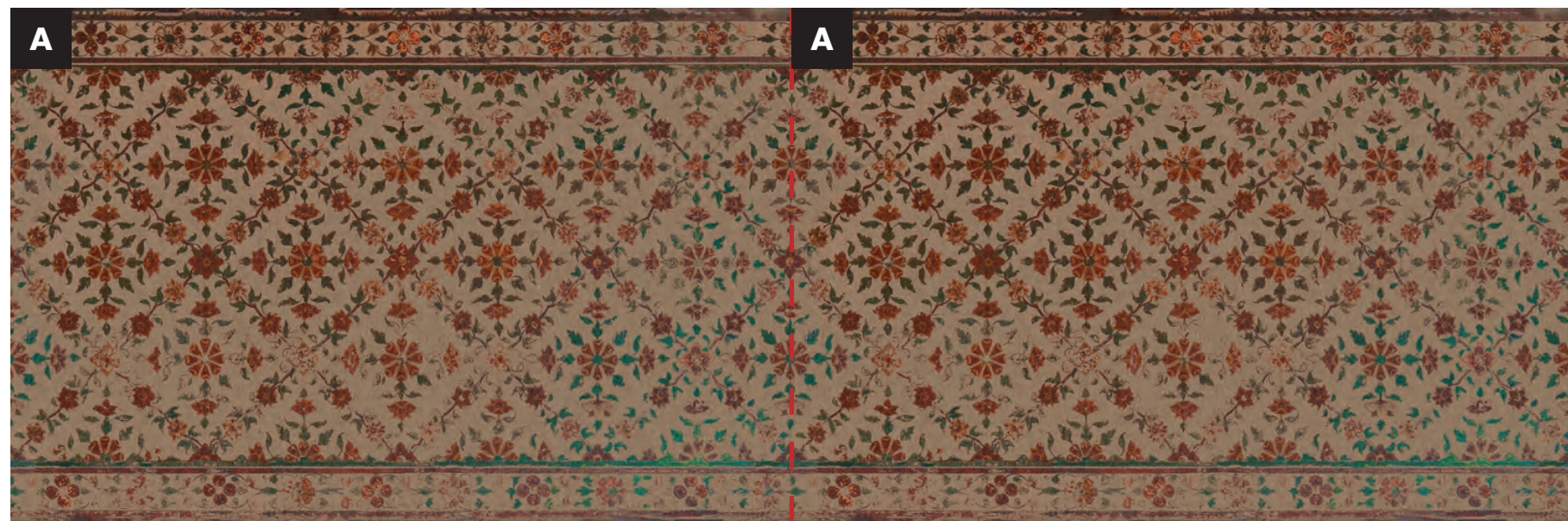


TDV2GP402_2



TDV2GP402_3

HOUSE FOR EVERYONE



TDV2GP403_1

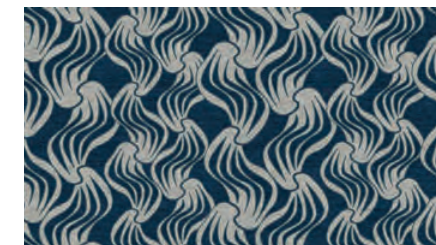
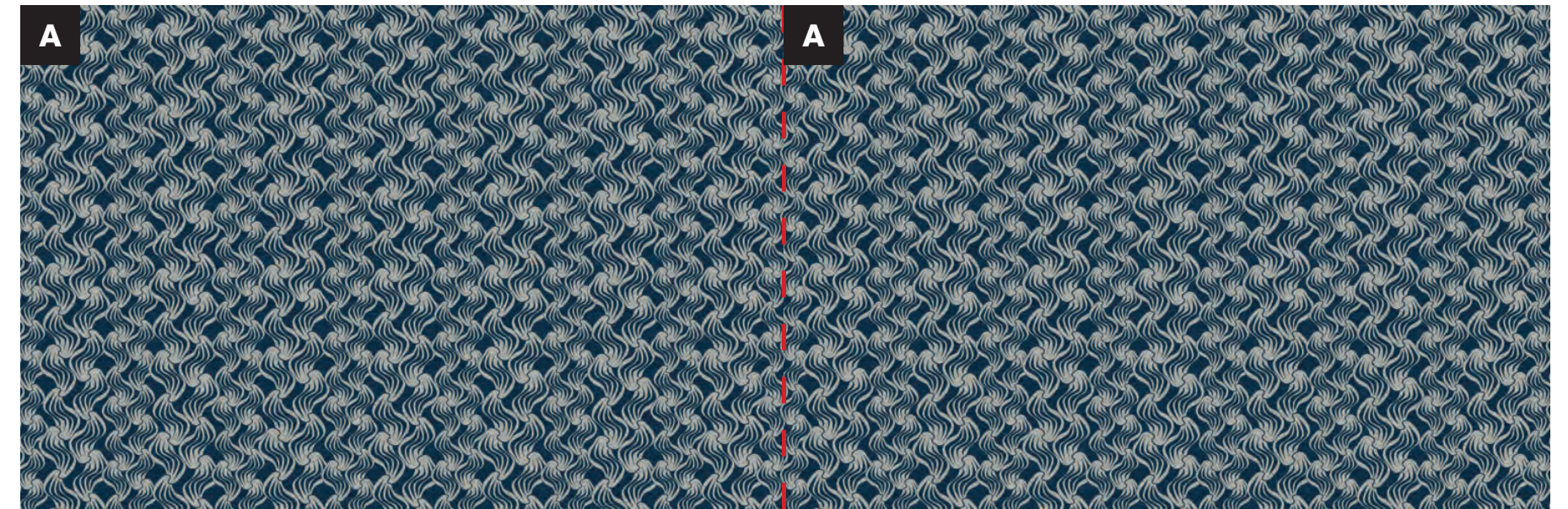


TDV2GP403_2

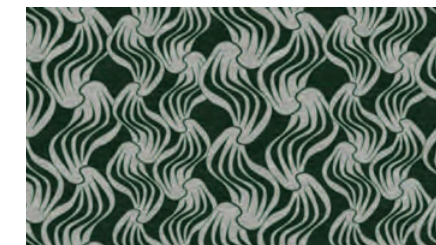


TDV2GP403_3

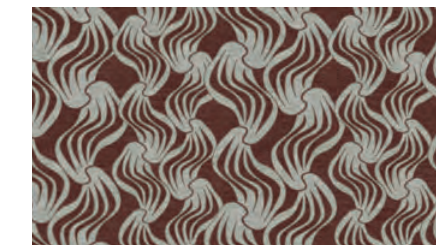
DEAR MR. FANTASY



TDV2GP404_1



TDV2GP404_2



TDV2GP404_3

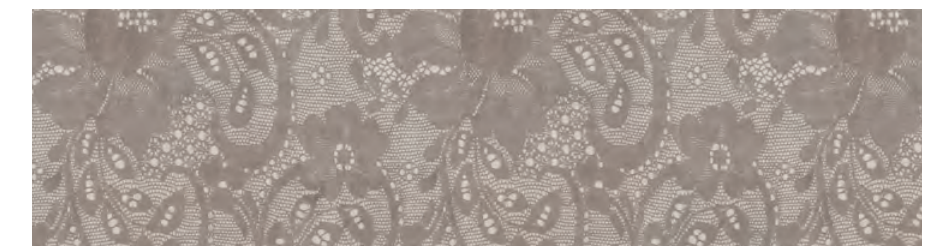


TDV2GP404_4

SMILING PHASES



TDV2GP405_1



TDV2GP405_2

TOUR POSTCARDS





















INDEX	PAGE	DISCOGRAPHY	TOURPOSTCARDS
SURREALISTIC PILLOW	007		
TDV2GP101 IN THE MORNING	008	096	108
TDV2GP102 WHITE RABBIT	012	096	110
TDV2GP103 HOW DO YOU FEEL	016	097	111
TDV2GP104 COME BACK BABY	020	097	112
TDV2GP105 SOMEBODY TO LOVE	024	098	112
FOR YOUR PLEASURE	029		
TDV2GP201 FOR YOUR PLEASURE	030	098	113
TDV2GP202 DO THE STRAND	034	099	114
TDV2GP203 EDITIONS OF YOU	038	099	115
TDV2GP204 STRICTLY CONFIDENTIAL	042	100	116
TDV2GP205 GREY LAGOONS	046	100	116
WHEELS OF FIRE	051		
TDV2GP301 PASSING THE TIME	052	101	117
TDV2GP302 CROSSROADS	056	101	118
TDV2GP303 SITTING ON THE TOP OF THE WORLD	060	102	119
TDV2GP304 BORN UNDER A BAD SIGN	064	102	120
TDV2GP305 WHITE ROOM	068	103	120
MR. FANTASY	073		
TDV2GP401 HEAVEN IS IN YOUR MIND	074	103	121
TDV2GP402 BERKSHIRE POPPIES	078	104	122
TDV2GP403 HOUSE FOR EVERYONE	082	104	124
TDV2GP404 DEAR MR. FANTASY	086	105	124
TDV2GP405 SMILING PHASES	090	105	125

THE DAYDREAMER

VOL.2 Lyrics by **GIOPAGANI**

Ph. © Raffaele Marone
Tourpostcards Ph. © Davide Lovatti

The photo shoot was set in a residence of the Bosco Verticale tower in via Gaetano de Castillia 11, Milan.

Thanks to COIMA SGR for the kind hospitality.

Il servizio fotografico è stato realizzato in una residenza della torre Bosco Verticale in via Gaetano de Castillia 11.

Si ringrazia COIMA SGR per la cortese ospitalità.

No part of this publication may be reproduced by any means without prior consent from the editor, except in instance of review, as permitted by the copyright law.

For permission please write to: info@londonart.com



This catalogue in digital version:

londonart.it/it/area-riservata

londonartwallpaper.com/it/area-riservata

londonartwallpaper.co.uk/it/area-riservata

SHOWROOM IT
Piazza S. Marco, 4
Milano | Italy
+39 02 23175856
milano@londonart.it

SHOWROOM UK
Design Centre, Chelsea Harbour
Lots Road, London | UK
+44 (0)2045473447
london@londonartwallpaper.co.uk

HEADQUARTER IT
Via Migliadizzi 18
Noventa Vicentina, Vicenza | Italy
+39 0444 760565
info@londonart.it

londonartwallpaper.com
londonartwallpaper.co.uk
londonart.it

THE DAYDREAMER vol.2

Lyrics by **GIOPAGANI**

TRACK 1 SURREALISTIC PILLOW	TRACK 2 WHEELS OF FIRE
TDV2GP101 IN THE MORNING	TDV2GP301 PASSING THE TIME
TDV2GP102 WHITE RABBIT	TDV2GP302 CROSSROADS
TDV2GP103 HOW DO YOU FEEL	TDV2GP303 SITTING ON THE TOP OF THE WORLD
TDV2GP104 COME BACK BABY	TDV2GP304 BORN UNDER A BAD SIGN
TDV2GP105 SOMEBODY TO LOVE	TDV2GP305 WHITE ROOM
TRACK 3 FOR YOUR PLEASURE	TRACK 4 MR. FANTASY
TDV2GP201 FOR YOUR PLEASURE	TDV2GP401 HEAVEN IS IN YOUR MIND
TDV2GP202 DO THE STRAND	TDV2GP402 BERKSHIRE POPPIES
TDV2GP203 EDITIONS OF YOU	TDV2GP403 HOUSE FOR EVERYONE
TDV2GP204 STRICTLY CONFIDENTIAL	TDV2GP404 DEAR MR. FANTASY
TDV2GP205 GREY LAGOONS	TDV2GP405 SMILING PHASES

LONDONARTWALLPAPER